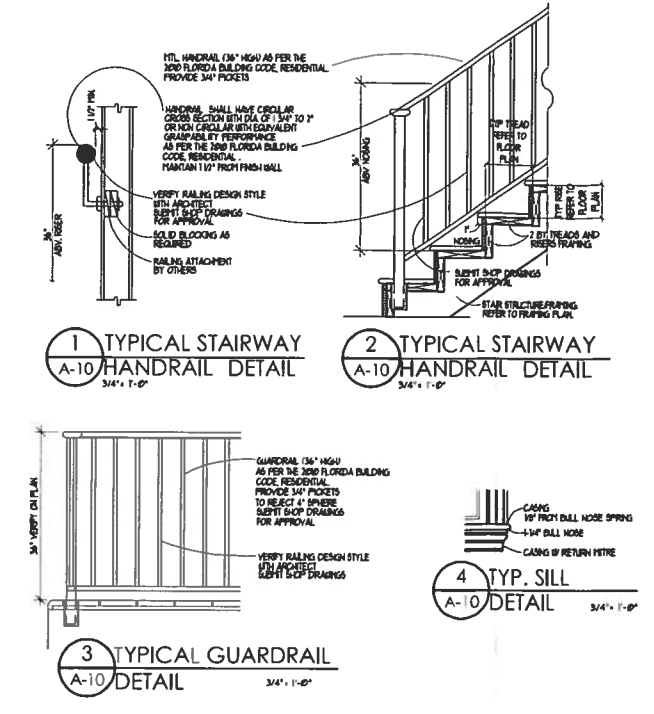


DOOR SCHEDULE

Table with columns: MARK, SIZE W X H X T, TYPE, MATERIAL, REMARKS. Rows include exterior doors, garage doors, pocket sliders, and interior doors with various materials like mahogany glass, french, and french doors w transoms.

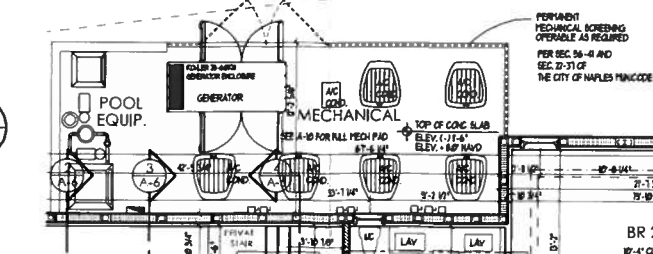
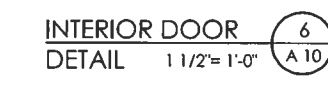
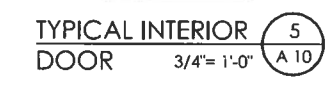
WINDOW SCHEDULE

Table with columns: MARK, CATALOG #, SIZE L X H, TYPE, MATERIAL, REMARKS. Rows include casement, fixed, and transom windows in various sizes and materials.



DOOR/WINDOW NOTES

- List of notes detailing specifications for windows and doors, including materials, finishes, and safety requirements. Notes cover window types, door types, glass treatments, and hardware.



MECHANICAL ENCLOSURE PLAN SCALE: 3/16" = 1'-0"

DOOR AND WINDOW SCHEDULES SCALE: AS NOTED