

A-4

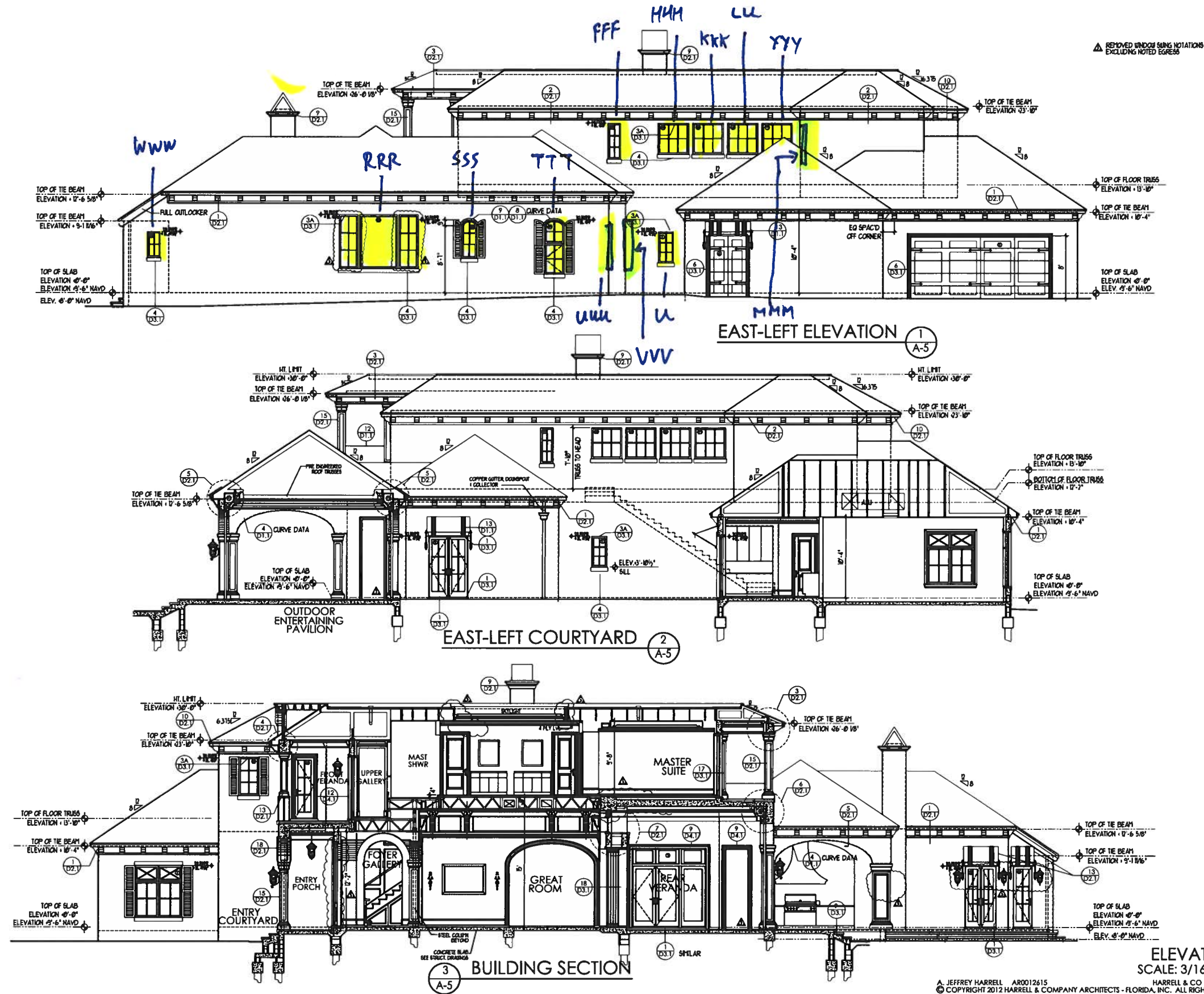
SULLIVAN RESIDENCE
620 ADMIRALY PARADE
PORT ROYAL NAPLES, FL. PERMIT 08-15-12

HARRELL & CO ARCHITECTS
2241 EAST TAMiami TRAIL SUITE 4 NAPLES FL 34112 • 239 435 1250

04-08-13 (FULL) REV 3 (A.I.T.)
01-14-13 (PARTIAL) REV 3 (R.D.S.)
12-10-12 REV 3 (CTF) REV 3 (CTF)
11-16-12 REV 2 (CTF) REV 2 (CTF)
09-14-12 REV 1 (R.D.S.) REV 1 (R.D.S.)
08-15-12 REV P (R.H.A.J.) REV 1 (R.D.S.)

ELEVATIONS
SCALE: 3/16" = 1'-0"
HARRELL & CO AA0002700
A JEFFREY HARRELL AR0012615
© COPYRIGHT 2012 HARRELL & COMPANY ARCHITECTS - FLORIDA, INC. ALL RIGHTS RESERVED

3



A-5

SULLIVAN RESIDENCE
620 ADMIRALTY PARADE
PORT ROYAL NAPLES, FL PERMIT 08-15-12

HARRELL & CO ARCHITECTS
2241 EAST TAMiami TRAIL SUITE 4 NAPLES FL 34112 • 239 435 1250

08-15-12 07-14-12 11-16-12 12-10-12 01-16-13 (PARTIAL) 04-08-13 (FULL)
REV P (R+M-J) REV 1 (RDS) REV 2 (CTF) REV 3 (RDS) REV 3 (M.T.)



3