



Elias Brothers General Contractor, Inc

Elias Brothers Roofing Division
4627 Arnold Avenue, Suite #201
Naples, FL 34104
Office: 239-293-2442
elizabeth@ebgcontracting.com

Client: Island Park 5.2
Property: 17601 Captiva
Ft Myers , FL 34104

Operator: ELIZABET

Estimator: Elizabeth Brath
Position: Estimator
Company: Elias Brothers Contracting
Business: 4627 Arnold Ave, Ste 201
Naples Florida

Business: (239) 293-2442
E-mail: elizabeth@ebgcontracting.com

Type of Estimate: Flood
Date Entered: 12/26/2022 Date Assigned:

Price List: FLNA8X_DEC22
Labor Efficiency: Restoration/Service/Remodel
Estimate: 17601CAPTIVA_RECON

We have been hired as the contractor to perform mitigation/construction/tarp/inventory/clean up services that are prescribed by the above referenced claim. It is our goal to follow all of your prescriptions to complete the repairs and /or the services. Purpose These guidelines were developed to ensure that all water incursions are handled in a professional manner which includes the latest information and procedures available. This document is revised ELIAS BROTHER GROUP Boulder Water Damage guidance document. The purpose of the document is to provide a consistent approach to outlining which buildings and materials have been impacted and what actions are necessary to bring the buildings back online as quickly and safely as possible. Every effort will be made to ensure the health and safety of all in a timely fashion.

We have been hired as the contractor to perform mitigation/construction/tarp/inventory/clean up services that are prescribed by the above referenced claim. It is our goal to follow all of your prescriptions to complete the repairs and /or the services. Purpose These guidelines were developed to ensure that all water incursions are handled in a professional manner which includes the latest information and procedures available. This document is revised ELIAS BROTHER GROUP Boulder Water Damage guidance document. The purpose of the document is to provide a consistent approach to outlining which buildings and materials have been impacted and what actions are necessary to bring the buildings back online as quickly and safely as possible. Every effort will be made to ensure the health and safety of all in a timely fashion.

Adopted and Required Building Codes: The 2012 International Residential Code (IRC) and the 2012 International Energy Conservation Code (IECC) have been adopted (and is REQUIRED) by the City of , (See attached corresponding code documentation in the images section, following this estimate). The 2012 International Code Council (ICC) are the rules that govern this estimate. Overhead and Profit (O&P): We are a true general contractor and we have been tasked with performing all tasks in this project, associated with several trades. This project requires the use of subcontractors for all of its tasks listed. We coordinate all of these subcontractors and their tasks, over the course of many weeks (planning and assessing included). It requires several trips made by many personnel. We finance the costs of this project, order materials (including special order), pick up materials, deliver materials, etc. This project involves many trades and requires extensive coordination, including, but not limited to: roofing, gutters, painting, mechanical, fencing, drywall, insulation, etc. This project also requires extensive INTERIOR repairs. The level of complexity and/or coordination required of a general contractor to carry out this project definitely met and exceeded any threshold necessary to obtain Overhead and Profit (O&P). It has been assessed to this estimate accordingly

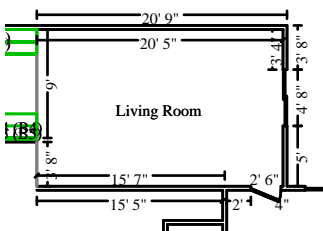
Elias Brothers Roofing Division
4627 Arnold Avenue, Suite #201
Naples, FL 34104
Office: 239-293-2442
elizabeth@ebgcontracting.com

17601CAPTIVA_RECON

Main Level

Main Level

DESCRIPTION	QUANTITY	UNIT PRICE	TAX	O&P	RCV	DEPREC.	ACV
477. Drywall Repair - Minimum Charge - Labor and Material	1.00 EA	628.28	1.41	188.90	818.59	(0.00)	818.59
478. Dumpster load - Approx. 30 yards, 5-7 tons of debris	2.00 EA	850.00	0.00	510.00	2,210.00	(0.00)	2,210.00
479. Temporary toilet (per month)	1.00 MO	119.00	0.00	35.70	154.70	(0.00)	154.70
480. Electrical (Bid Item)	1.00 EA	1,500.00	0.00	450.00	1,950.00	(0.00)	1,950.00
481. Plumbing (Bid Item)	1.00 EA	0.00	0.00	0.00	0.00	(0.00)	0.00
482. Light bulb - LED A19 - up to 500 lm - material only	14.00 EA	6.14	6.02	27.58	119.56	(0.00)	119.56
483. Job-site moving/storage container - 20' long - per month	2.00 MO	222.60	31.16	142.90	619.26	(0.00)	619.26
484. Smoke detector	8.00 EA	74.22	14.41	182.44	790.61	(0.00)	790.61
485. Window blind - PVC - 1" - 20.1 to 32 SF	6.00 EA	121.05	21.32	224.30	971.92	(0.00)	971.92
514. Residential Supervision / Project Management - per hour	90.00 HR	73.40	0.00	1,981.80	8,587.80	(0.00)	8,587.80
515. Administrative/supervisor labor/digitized filing charge (Bid Item)*	1.00 EA	1,200.00	0.00	360.00	1,560.00	(0.00)	1,560.00
Total: Main Level			74.32	4,103.62	17,782.44	0.00	17,782.44



Living Room

Height: 12'

646.00 SF Walls	265.42 SF Ceiling
911.42 SF Walls & Ceiling	265.42 SF Floor
29.49 SY Flooring	53.83 LF Floor Perimeter
53.83 LF Ceil. Perimeter	

Missing Wall

9' X 12'

Opens into KITCHEN

Missing Wall

3' 8" X 12'

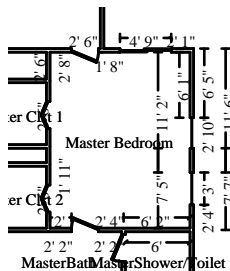
Opens into Exterior

DESCRIPTION	QUANTITY	UNIT PRICE	TAX	O&P	RCV	DEPREC.	ACV
10. Bamboo flooring - engineered - pre-finished	305.23 SF	10.70	139.52	1,021.64	4,427.12	(0.00)	4,427.12
Current price for material needed							
11. Paint door/window trim & jamb - 2 coats (per side)	2.00 EA	37.84	0.84	22.96	99.48	(0.00)	99.48
13. Door opening (jamb & casing) - 32"to36"wide - stain grade	1.00 EA	246.64	12.51	77.76	336.91	(0.00)	336.91

Elias Brothers Roofing Division
4627 Arnold Avenue, Suite #201
Naples, FL 34104
Office: 239-293-2442
elizabeth@ebgcontracting.com

CONTINUED - Living Room

DESCRIPTION	QUANTITY	UNIT PRICE	TAX	O&P	RCV	DEPREC.	ACV
Fair Market pricing for material needed							
15. Seal/prime then paint the walls (2 coats)	646.00 SF	1.13	10.40	222.12	962.50	(0.00)	962.50
16. Drywall patch / small repair, ready for paint	4.00 EA	119.26	0.99	143.42	621.45	(0.00)	621.45
18. Final cleaning - construction - Residential	265.42 SF	0.34	0.00	27.08	117.32	(0.00)	117.32
19. Contents - move out then reset - Extra large room	1.00 EA	231.15	0.00	69.34	300.49	(0.00)	300.49
20. Apply plant-based anti-microbial agent to the floor	265.42 SF	0.33	0.93	26.56	115.08	(0.00)	115.08
21. Remove Outlet	5.00 EA	7.22	0.00	10.84	46.94	(0.00)	46.94
22. Paint baseboard - two coats	53.83 LF	1.69	0.64	27.50	119.11	(0.00)	119.11
23. Baseboard - 5 1/4"	53.83 LF	5.66	10.63	94.58	409.89	(0.00)	409.89
25. 1/2" - drywall per LF - up to 2' tall	53.83 LF	14.67	5.50	238.56	1,033.75	(0.00)	1,033.75
Per EBG GC Pricing							
26. Mask and cover light fixture	2.00 EA	16.59	0.11	10.00	43.29	(0.00)	43.29
27. Mask and prep for paint - plastic, paper, tape (per LF)	53.83 LF	1.59	1.02	25.98	112.59	(0.00)	112.59
28. Clean ceiling fan and light - Heavy	1.00 EA	48.34	0.00	14.50	62.84	(0.00)	62.84
29. Clean cold air return cover	1.00 EA	11.32	0.00	3.40	14.72	(0.00)	14.72
30. Add for glued down application over concrete substrate	265.42 SF	1.29	17.84	108.08	468.31	(0.00)	468.31
Current price for material needed							
498. Batt insulation - 4" - R13 - paper / foil faced	161.50 SF	0.94	7.35	47.74	206.90	(0.00)	206.90
520. Base cap	53.83 LF	2.13	3.62	35.48	153.76	(0.00)	153.76
564. Floor preparation for resilient flooring	265.42 SF	0.77	1.86	61.88	268.11	(0.00)	268.11
Totals: Living Room			213.76	2,289.42	9,920.56	0.00	9,920.56



Master Bedroom

Height: 10'

586.67 SF Walls	212.33 SF Ceiling
799.00 SF Walls & Ceiling	212.33 SF Floor
23.59 SY Flooring	58.67 LF Floor Perimeter
58.67 LF Ceil. Perimeter	

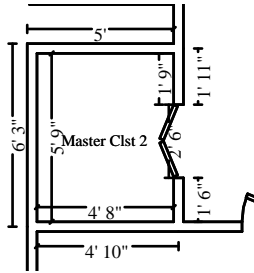


Elias Brothers General Contractor, Inc

Elias Brothers Roofing Division
 4627 Arnold Avenue, Suite #201
 Naples, FL 34104
 Office: 239-293-2442
 elizabeth@ebgcontracting.com

DESCRIPTION	QUANTITY	UNIT PRICE	TAX	O&P	RCV	DEPREC.	ACV
31. Bamboo flooring - engineered - pre-finished	244.18 SF	10.70	111.62	817.30	3,541.65	(0.00)	3,541.65
Current price for material needed							
32. Mask and prep for paint - plastic, paper, tape (per LF)	58.67 LF	1.59	1.11	28.32	122.72	(0.00)	122.72
33. 1/2" - drywall per LF - up to 2' tall	58.67 LF	14.67	6.00	260.00	1,126.69	(0.00)	1,126.69
Fair market pricing for material needed							
34. Baseboard - 5 1/4"	58.67 LF	5.66	11.58	103.10	446.75	(0.00)	446.75
35. Paint baseboard - two coats	58.67 LF	1.69	0.70	29.96	129.81	(0.00)	129.81
36. Clean ceiling fan and light - Heavy	1.00 EA	48.34	0.00	14.50	62.84	(0.00)	62.84
37. Outlet	5.00 EA	21.39	0.60	32.26	139.81	(0.00)	139.81
38. Apply plant-based anti-microbial agent to the floor	212.33 SF	0.33	0.74	21.24	92.05	(0.00)	92.05
39. Final cleaning - construction - Residential	212.33 SF	0.34	0.00	21.66	93.85	(0.00)	93.85
40. Contents - move out then reset - Large room	1.00 EA	115.57	0.00	34.68	150.25	(0.00)	150.25
41. Interior door unit	1.00 EA	342.49	18.50	108.30	469.29	(0.00)	469.29
Fair market pricing for material needed							
43. Paint door/window trim & jamb - 2 coats (per side)	2.00 EA	37.06	0.84	22.50	97.46	(0.00)	97.46
45. Door knob - interior	1.00 EA	46.10	1.50	14.30	61.90	(0.00)	61.90
46. Clean acoustic ceiling (popcorn) texture	212.33 SF	0.68	0.15	43.36	187.89	(0.00)	187.89
47. Drywall patch / small repair, ready for paint	2.00 EA	119.26	0.50	71.72	310.74	(0.00)	310.74
48. Mask and cover light fixture	2.00 EA	16.59	0.11	10.00	43.29	(0.00)	43.29
57. Door opening (jamb & casing) - 32"to36"wide - paint grade	1.00 EA	202.61	9.42	63.60	275.63	(0.00)	275.63
Price for material with Professional installation							
58. Clean cold air return cover	1.00 EA	11.32	0.00	3.40	14.72	(0.00)	14.72
59. Clean window unit (per side) 3 - 9 SF	2.00 EA	13.73	0.00	8.24	35.70	(0.00)	35.70
60. Add for glued down application over concrete substrate	212.33 SF	1.29	14.27	86.46	374.64	(0.00)	374.64
Current price for material needed							
499. Batt insulation - 4" - R13 - paper / foil faced	146.67 SF	0.94	6.67	43.36	187.90	(0.00)	187.90
521. Base cap	58.67 LF	2.13	3.94	38.68	167.59	(0.00)	167.59
538. 6-0 8-0 vinyl sliding patio door - High grade	2.00 EA	5,000.00	205.54	3,061.66	13,267.20	(0.00)	13,267.20
542. Seal/prime then paint the walls (2 coats)	586.67 SF	1.13	9.45	201.72	874.11	(0.00)	874.11
563. Paint door slab only - 2 coats (per side)	2.00 EA	44.70	1.43	27.24	118.07	(0.00)	118.07
565. Floor preparation for resilient flooring	212.33 SF	0.77	1.49	49.48	214.46	(0.00)	214.46
Totals: Master Bedroom			406.16	5,217.04	22,607.01	0.00	22,607.01

Elias Brothers Roofing Division
4627 Arnold Avenue, Suite #201
Naples, FL 34104
Office: 239-293-2442
elizabeth@ebgcontracting.com



Master Clst 2

Height: 8'

166.67 SF Walls
193.50 SF Walls & Ceiling
2.98 SY Flooring
20.83 LF Ceil. Perimeter

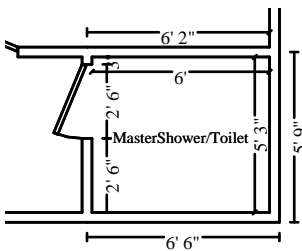
26.83 SF Ceiling
26.83 SF Floor
20.83 LF Floor Perimeter

DESCRIPTION	QUANTITY	UNIT PRICE	TAX	O&P	RCV	DEPREC.	ACV
61. Bamboo flooring - engineered - pre-finished	30.86 SF	10.70	14.11	103.30	447.61	(0.00)	447.61
Current price for material needed							
62. Final cleaning - construction - Residential	193.50 SF	0.34	0.00	19.74	85.53	(0.00)	85.53
63. Floor preparation for resilient flooring	26.83 SF	0.77	0.19	6.26	27.11	(0.00)	27.11
64. Clean cold air return cover	1.00 EA	11.32	0.00	3.40	14.72	(0.00)	14.72
65. Clean light fixture	1.00 EA	13.78	0.00	4.14	17.92	(0.00)	17.92
66. Clean closet organizer and rod	1.00 EA	48.90	0.09	14.70	63.69	(0.00)	63.69
67. Mask and prep for paint - plastic, paper, tape (per LF)	20.83 LF	1.59	0.39	10.06	43.57	(0.00)	43.57
68. 1/2" - drywall per LF - up to 2' tall	20.83 LF	14.67	2.13	92.32	400.03	(0.00)	400.03
69. Baseboard - 5 1/4"	20.83 LF	5.66	4.11	36.62	158.63	(0.00)	158.63
70. Paint baseboard - two coats	20.83 LF	1.69	0.25	10.64	46.09	(0.00)	46.09
72. Apply plant-based anti-microbial agent to the floor	26.83 SF	0.33	0.09	2.68	11.62	(0.00)	11.62
74. Bifold mirrored door set - Double	1.00 EA	585.55	30.04	184.68	800.27	(0.00)	800.27
80. Door opening (jamb & casing) - 32"to36"wide - stain grade	1.00 EA	246.64	12.51	77.76	336.91	(0.00)	336.91
Fair Market pricing for material needed							
82. Paint door/window trim & jamb - 2 coats (per side)	2.00 EA	37.84	0.84	22.96	99.48	(0.00)	99.48
83. Add for glued down application over concrete substrate	26.83 SF	1.29	1.80	10.92	47.33	(0.00)	47.33
Current price for material needed							
500. Batt insulation - 4" - R13 - paper / foil faced	41.67 SF	0.94	1.90	12.34	53.41	(0.00)	53.41
522. Base cap	20.83 LF	2.13	1.40	13.74	59.51	(0.00)	59.51
543. Seal/prime then paint the walls (2 coats)	166.67 SF	1.13	2.68	57.30	248.32	(0.00)	248.32
559. Paint door slab only - 2 coats (per side)	2.00 EA	44.70	1.43	27.24	118.07	(0.00)	118.07
Totals: Master Clst 2			73.96	710.80	3,079.82	0.00	3,079.82

Elias Brothers Roofing Division
 4627 Arnold Avenue, Suite #201
 Naples, FL 34104
 Office: 239-293-2442
 elizabeth@ebgcontracting.com

CONTINUED - MasterBath

DESCRIPTION	QUANTITY	UNIT PRICE	TAX	O&P	RCV	DEPREC.	ACV
117. Tile floor covering - Premium grade	70.44 SF	17.36	55.37	383.48	1,661.69	(0.00)	1,661.69
501. Batt insulation - 4" - R13 - paper / foil faced	101.50 SF	0.94	4.62	30.00	130.03	(0.00)	130.03
523. Base cap	33.83 LF	2.13	2.27	22.30	96.63	(0.00)	96.63
544. Seal/prime then paint the walls (2 coats)	406.00 SF	1.13	6.54	139.60	604.92	(0.00)	604.92
560. Paint door slab only - 2 coats (per side)	2.00 EA	44.70	1.43	27.24	118.07	(0.00)	118.07
566. Floor preparation for resilient flooring	61.25 SF	0.77	0.43	14.26	61.85	(0.00)	61.85
Totals: MasterBath			330.54	2,722.72	11,798.11	0.00	11,798.11


MasterShower/Toilet
Height: 8'

180.00 SF Walls	31.50 SF Ceiling
211.50 SF Walls & Ceiling	31.50 SF Floor
3.50 SY Flooring	22.50 LF Floor Perimeter
22.50 LF Ceil. Perimeter	

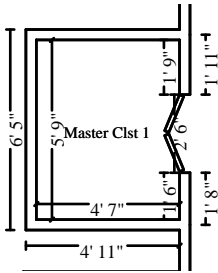
DESCRIPTION	QUANTITY	UNIT PRICE	TAX	O&P	RCV	DEPREC.	ACV
119. Final cleaning - construction - Residential	211.50 SF	0.34	0.00	21.58	93.49	(0.00)	93.49
120. R&R Shower base	1.00 EA	410.96	19.34	129.10	559.40	(0.00)	559.40
121. P-trap assembly - ABS (plastic)	1.00 EA	71.63	0.56	21.64	93.83	(0.00)	93.83
122. R&R Towel bar	1.00 EA	40.52	1.06	12.48	54.06	(0.00)	54.06
123. R&R Handicap grab bar - Stainless steel, 1 1/2" x 30"	1.00 EA	98.00	3.19	30.36	131.55	(0.00)	131.55
124. Floor drain - tub/shower - metal/plastic	1.00 EA	48.55	0.73	14.78	64.06	(0.00)	64.06
125. Paint baseboard - two coats	22.50 LF	1.69	0.27	11.48	49.78	(0.00)	49.78
126. Mask and prep for paint - plastic, paper, tape (per LF)	22.50 LF	1.59	0.43	10.86	47.07	(0.00)	47.07
127. Bathroom ventilation fan w/light	1.00 EA	175.94	8.38	55.30	239.62	(0.00)	239.62
128. Baseboard - 5 1/4"	22.50 LF	5.66	4.44	39.54	171.33	(0.00)	171.33
129. Apply plant-based anti-microbial agent to the floor	31.50 SF	0.33	0.11	3.16	13.67	(0.00)	13.67
131. Pocket door unit - Colonist	1.00 EA	356.87	12.67	110.86	480.40	(0.00)	480.40

Elias Brothers Roofing Division
 4627 Arnold Avenue, Suite #201
 Naples, FL 34104
 Office: 239-293-2442
 elizabeth@ebgcontracting.com

CONTINUED - MasterShower/Toilet

DESCRIPTION	QUANTITY	UNIT PRICE	TAX	O&P	RCV	DEPREC.	ACV
132. Pocket door latch	1.00 EA	29.21	0.79	9.00	39.00	(0.00)	39.00
133. Toilet seat	1.00 EA	59.54	2.20	18.52	80.26	(0.00)	80.26
134. Toilet	1.00 EA	547.59	21.30	170.68	739.57	(0.00)	739.57
135. Angle stop valve	1.00 EA	38.98	0.50	11.86	51.34	(0.00)	51.34
136. Toilet paper holder	1.00 EA	28.82	0.87	8.90	38.59	(0.00)	38.59
137. Toilet flange	1.00 EA	282.77	6.44	86.78	375.99	(0.00)	375.99
138. Tile shower - 61 to 100 SF	1.00 EA	1,816.91	41.59	557.56	2,416.06	(0.00)	2,416.06
139. Soap dish - Wall mounted	1.00 EA	23.32	0.77	7.24	31.33	(0.00)	31.33
140. Detach & Reset Cabinetry - upper (wall) units	2.00 LF	76.54	0.00	45.92	199.00	(0.00)	199.00
141. Clean cabinetry - upper - inside and out	2.00 LF	19.18	0.01	11.50	49.87	(0.00)	49.87
142. Clean towel bar	1.00 EA	9.17	0.00	2.76	11.93	(0.00)	11.93
143. Detach & Reset Towel ring	1.00 EA	21.95	0.00	6.58	28.53	(0.00)	28.53
144. Paint door slab only - 2 coats (per side)	2.00 EA	44.70	1.43	27.24	118.07	(0.00)	118.07
145. Paint door/window trim & jamb - 2 coats (per side)	2.00 EA	37.06	0.84	22.50	97.46	(0.00)	97.46
146. 5/8" - drywall per LF - up to 2' tall	22.50 LF	15.16	2.57	103.12	446.79	(0.00)	446.79
Per EBG GC Pricing							
150. Door opening (jamb & casing) - 32"to36"wide - stain grade	1.00 EA	246.64	12.51	77.76	336.91	(0.00)	336.91
153. Tile/stone sealer	31.50 SF	0.90	0.71	8.72	37.78	(0.00)	37.78
154. Tile floor covering - Premium grade	36.23 SF	17.36	28.48	197.22	854.65	(0.00)	854.65
502. Batt insulation - 4" - R13 - paper / foil faced	45.00 SF	0.94	2.05	13.32	57.67	(0.00)	57.67
516. Interior door unit - Premium grade	1.00 EA	481.17	27.83	152.70	661.70	(0.00)	661.70
524. Base cap	22.50 LF	2.13	1.51	14.84	64.28	(0.00)	64.28
540. Door knob - interior	1.00 EA	46.10	1.50	14.30	61.90	(0.00)	61.90
545. Seal/prime then paint the walls (2 coats)	180.00 SF	1.13	2.90	61.90	268.20	(0.00)	268.20
567. Floor preparation for resilient flooring	31.50 SF	0.77	0.22	7.34	31.82	(0.00)	31.82
Totals: MasterShower/Toilet			208.20	2,099.40	9,096.96	0.00	9,096.96

Elias Brothers Roofing Division
4627 Arnold Avenue, Suite #201
Naples, FL 34104
Office: 239-293-2442
elizabeth@ebgcontracting.com



Master Clst 1

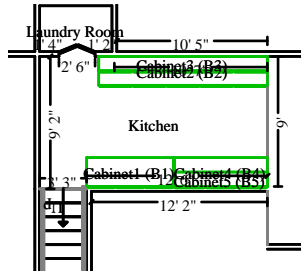
Height: 8'

165.33 SF Walls
191.69 SF Walls & Ceiling
2.93 SY Flooring
20.67 LF Ceil. Perimeter

26.35 SF Ceiling
26.35 SF Floor
20.67 LF Floor Perimeter

DESCRIPTION	QUANTITY	UNIT PRICE	TAX	O&P	RCV	DEPREC.	ACV
155. Bamboo flooring - engineered - pre-finished	30.31 SF	10.70	13.85	101.46	439.63	(0.00)	439.63
Current price for material needed							
156. Final cleaning - construction - Residential	191.69 SF	0.34	0.00	19.56	84.73	(0.00)	84.73
157. Floor preparation for resilient flooring	26.35 SF	0.77	0.18	6.14	26.61	(0.00)	26.61
158. Clean cold air return cover	1.00 EA	11.32	0.00	3.40	14.72	(0.00)	14.72
159. Clean light fixture	1.00 EA	13.78	0.00	4.14	17.92	(0.00)	17.92
160. Clean closet organizer and rod	1.00 EA	48.90	0.09	14.70	63.69	(0.00)	63.69
161. Mask and prep for paint - plastic, paper, tape (per LF)	20.67 LF	1.59	0.39	9.98	43.24	(0.00)	43.24
162. 1/2" - drywall per LF - up to 2' tall	20.67 LF	14.67	2.11	91.60	396.94	(0.00)	396.94
163. Baseboard - 3 1/4"	20.67 LF	4.53	2.76	28.92	125.32	(0.00)	125.32
164. Paint baseboard - two coats	20.67 LF	1.69	0.25	10.56	45.74	(0.00)	45.74
165. Tear out subfloor & bag for disposal - Category 3	26.35 SF	3.08	0.17	24.40	105.73	(0.00)	105.73
166. Apply plant-based anti-microbial agent to the floor	26.35 SF	0.33	0.09	2.64	11.43	(0.00)	11.43
168. Bifold mirrored door set - Double	1.00 EA	585.55	30.04	184.68	800.27	(0.00)	800.27
171. Carpet pad	26.35 SF	0.67	0.94	5.58	24.17	(0.00)	24.17
172. Carpet - High grade	30.31 SF	5.77	9.93	55.44	240.26	(0.00)	240.26
Fair market pricing for material needed							
174. Door opening (jamb & casing) - 32"to36"wide - stain grade	1.00 EA	246.64	12.51	77.76	336.91	(0.00)	336.91
Fair Market pricing for material needed							
176. Paint door/window trim & jamb - 2 coats (per side)	2.00 EA	37.84	0.84	22.96	99.48	(0.00)	99.48
177. Add for glued down application over concrete substrate	1.00 SF	1.29	0.07	0.40	1.76	(0.00)	1.76
Current price for material needed							
503. Batt insulation - 4" - R13 - paper / foil faced	41.33 SF	0.94	1.88	12.22	52.95	(0.00)	52.95
525. Base cap	20.67 LF	2.13	1.39	13.62	59.04	(0.00)	59.04
546. Seal/prime then paint the walls (2 coats)	165.33 SF	1.13	2.66	56.84	246.32	(0.00)	246.32
Totals: Master Clst 1			80.15	747.00	3,236.86	0.00	3,236.86

Elias Brothers Roofing Division
4627 Arnold Avenue, Suite #201
Naples, FL 34104
Office: 239-293-2442
elizabeth@ebgcontracting.com



Kitchen

Height: 12'

449.00 SF Walls
591.29 SF Walls & Ceiling
15.81 SY Flooring
37.42 LF Ceil. Perimeter

142.29 SF Ceiling
142.29 SF Floor
37.42 LF Floor Perimeter

Missing Wall

3' 3" X 12'

Opens into STAIRS

Missing Wall

9' X 12'

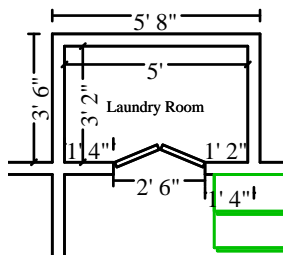
Opens into LIVING_ROOM2

DESCRIPTION	QUANTITY	UNIT PRICE	TAX	O&P	RCV	DEPREC.	ACV
178. Add for glued down application over concrete substrate	1.00 SF	1.29	0.07	0.40	1.76	(0.00)	1.76
Current price for material needed							
179. Detach & Reset Cabinetry - upper (wall) units	15.00 LF	76.54	0.00	344.44	1,492.54	(0.00)	1,492.54
180. Refrigerator - side by side - 22 to 25 cf	1.00 EA	1,645.65	112.00	527.30	2,284.95	(0.00)	2,284.95
181. Cabinetry - lower (base) units	16.00 LF	271.68	245.17	1,377.62	5,969.67	(0.00)	5,969.67
182. Clean ceiling fan and light	1.00 EA	33.86	0.00	10.16	44.02	(0.00)	44.02
183. Clean cabinetry - upper - inside and out	20.00 LF	19.18	0.13	115.12	498.85	(0.00)	498.85
184. Garbage disposer	1.00 EA	270.95	9.79	84.22	364.96	(0.00)	364.96
185. Range - freestanding - gas	1.00 EA	1,176.29	70.00	373.88	1,620.17	(0.00)	1,620.17
186. Countertop - solid surface	20.00 SF	69.86	62.58	437.94	1,897.72	(0.00)	1,897.72
187. P-trap assembly - ABS (plastic)	1.00 EA	71.63	0.56	21.64	93.83	(0.00)	93.83
188. Apply plant-based anti-microbial agent to the floor	142.29 SF	0.33	0.50	14.24	61.70	(0.00)	61.70
189. Outlet	5.00 EA	21.39	0.60	32.26	139.81	(0.00)	139.81
190. Countertop subdeck - plywood	36.00 SF	4.28	4.44	47.56	206.08	(0.00)	206.08
191. Paint baseboard - two coats	37.42 LF	1.69	0.45	19.12	82.81	(0.00)	82.81
192. Baseboard - 3 1/4"	37.42 LF	4.53	5.00	52.36	226.87	(0.00)	226.87
193. Sink - double basin - Standard grade	1.00 EA	318.74	12.77	99.46	430.97	(0.00)	430.97
194. 1/2" - drywall per LF - up to 2' tall	37.42 LF	14.67	3.82	165.82	718.59	(0.00)	718.59
195. Mask and prep for paint - plastic, paper, tape (per LF)	37.42 LF	1.59	0.71	18.08	78.29	(0.00)	78.29
196. Dishwasher - High grade	1.00 EA	1,000.59	59.40	318.00	1,377.99	(0.00)	1,377.99
197. Detach & Reset Countertop - Granite or Marble - Premium grade	36.00 SF	44.60	0.18	481.74	2,087.52	(0.00)	2,087.52
198. Sink faucet - Kitchen - High grade	1.00 EA	395.57	21.30	125.08	541.95	(0.00)	541.95
199. Remove Angle stop valve	1.00 EA	7.17	0.00	2.16	9.33	(0.00)	9.33
200. Clean wall hanging - Light clean	3.00 EA	7.16	0.06	6.46	28.00	(0.00)	28.00
201. Refrig. water line - Disconnect & reconnect - with repairs	1.00 EA	105.24	1.56	32.04	138.84	(0.00)	138.84
202. Cabinet knob or pull	18.00 EA	10.25	4.46	56.70	245.66	(0.00)	245.66

Elias Brothers Roofing Division
4627 Arnold Avenue, Suite #201
Naples, FL 34104
Office: 239-293-2442
elizabeth@ebgcontracting.com

CONTINUED - Kitchen

DESCRIPTION	QUANTITY	UNIT PRICE	TAX	O&P	RCV	DEPREC.	ACV
203. Contents - move out then reset - Large room	1.00 EA	115.57	0.00	34.68	150.25	(0.00)	150.25
205. Clean countertop	6.00 SF	0.97	0.01	1.74	7.57	(0.00)	7.57
206. Drywall patch / small repair, ready for paint	4.00 EA	119.26	0.99	143.42	621.45	(0.00)	621.45
211. Paint cabinetry - lower - inside and out	16.00 LF	35.10	5.29	170.06	736.95	(0.00)	736.95
212. 4" backsplash for flat laid countertop	20.00 LF	9.52	7.59	59.40	257.39	(0.00)	257.39
213. Sink faucet - Kitchen	1.00 EA	279.26	13.16	87.72	380.14	(0.00)	380.14
214. Clean thermostat	1.00 EA	16.66	0.00	5.00	21.66	(0.00)	21.66
215. Clean smoke/carbon monoxide detector	1.00 EA	8.15	0.00	2.44	10.59	(0.00)	10.59
216. Bamboo flooring - engineered - pre-finished	163.64 SF	10.70	74.80	547.72	2,373.47	(0.00)	2,373.47
Current price for material needed							
504. Batt insulation - 4" - R13 - paper / foil faced	112.25 SF	0.94	5.11	33.20	143.83	(0.00)	143.83
526. Base cap	37.42 LF	2.13	2.51	24.68	106.89	(0.00)	106.89
547. Seal/prime then paint the walls (2 coats)	449.00 SF	1.13	7.23	154.38	668.98	(0.00)	668.98
568. Floor preparation for resilient flooring	142.29 SF	0.77	1.00	33.16	143.72	(0.00)	143.72
Totals: Kitchen			733.24	6,061.40	26,265.77	0.00	26,265.77



Laundry Room

Height: 8'

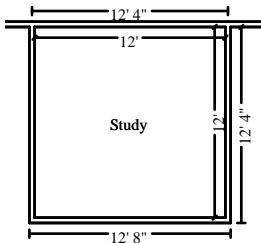
130.67 SF Walls	15.83 SF Ceiling
146.50 SF Walls & Ceiling	15.83 SF Floor
1.76 SY Flooring	16.33 LF Floor Perimeter
16.33 LF Ceil. Perimeter	

DESCRIPTION	QUANTITY	UNIT PRICE	TAX	O&P	RCV	DEPREC.	ACV
218. Mask and prep for paint - plastic, paper, tape (per LF)	16.33 LF	1.59	0.31	7.88	34.15	(0.00)	34.15
219. 1/2" - drywall per LF - up to 2' tall	16.33 LF	14.67	1.67	72.36	313.59	(0.00)	313.59
Per EBG GC Pricing							
220. Paint baseboard - two coats	16.33 LF	1.69	0.19	8.34	36.13	(0.00)	36.13

Elias Brothers Roofing Division
4627 Arnold Avenue, Suite #201
Naples, FL 34104
Office: 239-293-2442
elizabeth@ebgcontracting.com

CONTINUED - Laundry Room

DESCRIPTION	QUANTITY	UNIT PRICE	TAX	O&P	RCV	DEPREC.	ACV
222. Apply plant-based anti-microbial agent to the floor	15.83 SF	0.33	0.06	1.58	6.86	(0.00)	6.86
223. Final cleaning - construction - Residential	15.83 SF	0.34	0.00	1.62	7.00	(0.00)	7.00
225. Mask and cover light fixture	2.00 EA	16.59	0.11	10.00	43.29	(0.00)	43.29
226. Washer/Washing machine & dryer combo - Electric	1.00 EA	1,782.46	112.00	568.34	2,462.80	(0.00)	2,462.80
227. Interior door unit	1.00 EA	342.49	18.50	108.30	469.29	(0.00)	469.29
233. Door opening (jamb & casing) - 32"to36"wide - paint grade	1.00 EA	202.61	9.42	63.60	275.63	(0.00)	275.63
Price for material with Professional installation							
234. Paint door slab only - 2 coats (per side)	2.00 EA	45.58	1.43	27.76	120.35	(0.00)	120.35
235. Door knob - interior	1.00 EA	46.10	1.50	14.30	61.90	(0.00)	61.90
505. Batt insulation - 4" - R13 - paper / foil faced	32.67 SF	0.94	1.49	9.66	41.86	(0.00)	41.86
548. Seal/prime then paint the walls (2 coats)	130.67 SF	1.13	2.10	44.94	194.70	(0.00)	194.70
569. Floor preparation for resilient flooring	15.83 SF	0.77	0.11	3.70	16.00	(0.00)	16.00
Totals: Laundry Room			148.89	942.38	4,083.55	0.00	4,083.55



Study

Height: 8'

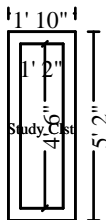
384.00 SF Walls	144.00 SF Ceiling
528.00 SF Walls & Ceiling	144.00 SF Floor
16.00 SY Flooring	48.00 LF Floor Perimeter
48.00 LF Ceil. Perimeter	

DESCRIPTION	QUANTITY	UNIT PRICE	TAX	O&P	RCV	DEPREC.	ACV
237. Bamboo flooring - engineered - pre-finished	165.60 SF	10.70	75.70	554.30	2,401.92	(0.00)	2,401.92
Current price for material needed							
238. Mask and prep for paint - plastic, paper, tape (per LF)	48.00 LF	1.59	0.91	23.18	100.41	(0.00)	100.41
239. 1/2" - drywall per LF - up to 2' tall	48.00 LF	14.67	4.91	212.72	921.79	(0.00)	921.79
240. Baseboard - 5 1/4"	48.00 LF	5.66	9.48	84.34	365.50	(0.00)	365.50
241. Paint baseboard - two coats	48.00 LF	1.69	0.57	24.52	106.21	(0.00)	106.21

Elias Brothers Roofing Division
4627 Arnold Avenue, Suite #201
Naples, FL 34104
Office: 239-293-2442
elizabeth@ebgcontracting.com

CONTINUED - Study

DESCRIPTION	QUANTITY	UNIT PRICE	TAX	O&P	RCV	DEPREC.	ACV
242. Clean ceiling fan and light - Heavy	1.00 EA	48.34	0.00	14.50	62.84	(0.00)	62.84
243. Outlet	5.00 EA	21.39	0.60	32.26	139.81	(0.00)	139.81
244. Apply plant-based anti-microbial agent to the floor	144.00 SF	0.33	0.50	14.42	62.44	(0.00)	62.44
245. Final cleaning - construction - Residential	144.00 SF	0.34	0.00	14.68	63.64	(0.00)	63.64
247. Door knob - interior	1.00 EA	46.10	1.50	14.30	61.90	(0.00)	61.90
248. Mask and cover light fixture	2.00 EA	16.59	0.11	10.00	43.29	(0.00)	43.29
251. Carpet pad	144.00 SF	0.67	5.14	30.48	132.10	(0.00)	132.10
252. Carpet - Premium grade	165.60 SF	7.81	77.90	411.38	1,782.62	(0.00)	1,782.62
253. Door opening (jamb & casing) - 32"to36"wide - stain grade	1.00 EA	246.64	12.51	77.76	336.91	(0.00)	336.91
254. Interior door unit	1.00 EA	342.49	18.50	108.30	469.29	(0.00)	469.29
258. Paint door slab only - 2 coats (per side)	2.00 EA	45.58	1.43	27.76	120.35	(0.00)	120.35
259. Clean cold air return cover	1.00 EA	11.32	0.00	3.40	14.72	(0.00)	14.72
260. Clean window unit (per side) 3 - 9 SF	1.00 EA	13.73	0.00	4.12	17.85	(0.00)	17.85
261. Add for glued down application over concrete substrate	1.00 SF	1.29	0.07	0.40	1.76	(0.00)	1.76
Current price for material needed							
506. Batt insulation - 4" - R13 - paper / foil faced	96.00 SF	0.94	4.37	28.40	123.01	(0.00)	123.01
529. Base cap	48.00 LF	2.13	3.23	31.64	137.11	(0.00)	137.11
550. Seal/prime then paint the walls (2 coats)	384.00 SF	1.13	6.18	132.04	572.14	(0.00)	572.14
570. Floor preparation for resilient flooring	144.00 SF	0.77	1.01	33.56	145.45	(0.00)	145.45
Totals: Study			224.62	1,888.46	8,183.06	0.00	8,183.06



Study Clst

Height: 8'

90.67 SF Walls	5.25 SF Ceiling
95.92 SF Walls & Ceiling	5.25 SF Floor
0.58 SY Flooring	11.33 LF Floor Perimeter
11.33 LF Ceil. Perimeter	

DESCRIPTION	QUANTITY	UNIT PRICE	TAX	O&P	RCV	DEPREC.	ACV
-------------	----------	------------	-----	-----	-----	---------	-----



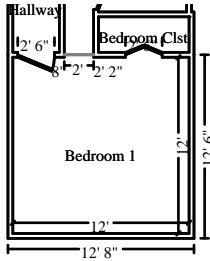
Elias Brothers General Contractor, Inc

Elias Brothers Roofing Division
 4627 Arnold Avenue, Suite #201
 Naples, FL 34104
 Office: 239-293-2442
 elizabeth@ebgcontracting.com

CONTINUED - Study Clst

DESCRIPTION	QUANTITY	UNIT PRICE	TAX	O&P	RCV	DEPREC.	ACV
262. Bamboo flooring - engineered - pre-finished	6.04 SF	10.70	2.76	20.20	87.59	(0.00)	87.59
Current price for material needed							
263. Mask and prep for paint - plastic, paper, tape (per LF)	11.33 LF	1.59	0.21	5.46	23.68	(0.00)	23.68
264. 1/2" - drywall per LF - up to 2' tall	11.33 LF	14.67	1.16	50.20	217.57	(0.00)	217.57
265. Baseboard - 3 1/4"	11.33 LF	4.53	1.51	15.86	68.69	(0.00)	68.69
266. Paint baseboard - two coats	11.33 LF	1.69	0.14	5.78	25.07	(0.00)	25.07
267. Clean closet organizer and rod	1.00 EA	48.90	0.09	14.70	63.69	(0.00)	63.69
268. Apply plant-based anti-microbial agent to the floor	5.25 SF	0.33	0.02	0.52	2.27	(0.00)	2.27
269. Final cleaning - construction - Residential	5.25 SF	0.34	0.00	0.54	2.33	(0.00)	2.33
270. Contents - move out then reset - Small room	1.00 EA	57.84	0.00	17.36	75.20	(0.00)	75.20
271. Closet shelf and rod package - Detach & reset	11.33 LF	14.30	0.00	48.60	210.62	(0.00)	210.62
273. Bifold door set - full louvered - Double	1.00 EA	501.37	24.83	157.86	684.06	(0.00)	684.06
274. Paint full lvr'd bifold door set - slab - 2 coats -per side	1.00 EA	95.65	1.40	29.12	126.17	(0.00)	126.17
275. Mask and cover light fixture	1.00 EA	16.59	0.05	5.00	21.64	(0.00)	21.64
280. Door opening (jamb & casing) - 32"to36"wide - stain grade	1.00 EA	246.64	12.51	77.76	336.91	(0.00)	336.91
283. Add for glued down application over concrete substrate	1.00 SF	1.29	0.07	0.40	1.76	(0.00)	1.76
Current price for material needed							
507. Batt insulation - 4" - R13 - paper / foil faced	22.67 SF	0.94	1.03	6.70	29.04	(0.00)	29.04
530. Base cap	11.33 LF	2.13	0.76	7.46	32.35	(0.00)	32.35
551. Seal/prime then paint the walls (2 coats)	90.67 SF	1.13	1.46	31.18	135.10	(0.00)	135.10
571. Floor preparation for resilient flooring	5.25 SF	0.77	0.04	1.24	5.32	(0.00)	5.32
Totals: Study Clst			48.04	495.94	2,149.06	0.00	2,149.06

Elias Brothers Roofing Division
4627 Arnold Avenue, Suite #201
Naples, FL 34104
Office: 239-293-2442
elizabeth@ebgcontracting.com



Bedroom 1

Height: 8'

368.00 SF Walls	144.33 SF Ceiling
512.33 SF Walls & Ceiling	144.33 SF Floor
16.04 SY Flooring	46.00 LF Floor Perimeter
46.00 LF Ceil. Perimeter	

Missing Wall

2' X 8'

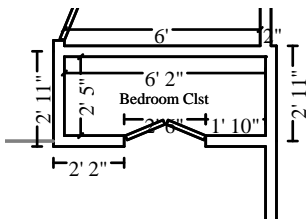
Opens into Exterior

DESCRIPTION	QUANTITY	UNIT PRICE	TAX	O&P	RCV	DEPREC.	ACV
284. Bamboo flooring - engineered - pre-finished	165.98 SF	10.70	75.87	555.56	2,407.42	(0.00)	2,407.42
Current price for material needed							
285. Mask and prep for paint - plastic, paper, tape (per LF)	46.00 LF	1.59	0.87	22.20	96.21	(0.00)	96.21
286. 1/2" - drywall per LF - up to 2' tall	46.00 LF	14.67	4.70	203.86	883.38	(0.00)	883.38
287. Baseboard - 5 1/4"	46.00 LF	5.66	9.08	80.82	350.26	(0.00)	350.26
288. Paint baseboard - two coats	46.00 LF	1.69	0.55	23.48	101.77	(0.00)	101.77
289. Clean ceiling fan and light - Heavy	1.00 EA	48.34	0.00	14.50	62.84	(0.00)	62.84
290. Apply plant-based anti-microbial agent to the floor	144.33 SF	0.33	0.51	14.44	62.58	(0.00)	62.58
291. Final cleaning - construction - Residential	144.33 SF	0.34	0.00	14.72	63.79	(0.00)	63.79
292. Contents - move out then reset - Large room	1.00 EA	115.57	0.00	34.68	150.25	(0.00)	150.25
294. Door knob - interior	1.00 EA	46.10	1.50	14.30	61.90	(0.00)	61.90
295. Clean sill - tile	4.00 LF	1.24	0.01	1.48	6.45	(0.00)	6.45
296. Mask and cover light fixture	2.00 EA	16.59	0.11	10.00	43.29	(0.00)	43.29
300. Door opening (jamb & casing) - 32"to36"wide - stain grade	1.00 EA	246.64	12.51	77.76	336.91	(0.00)	336.91
Fair market pricing for professional material needed							
301. Interior door unit	1.00 EA	342.49	18.50	108.30	469.29	(0.00)	469.29
Cost of professional material needed							
304. Door opening (jamb & casing) - 32"to36"wide - paint grade	1.00 EA	202.61	9.42	63.60	275.63	(0.00)	275.63
Price for material with Professional installation							
305. Paint door slab only - 2 coats (per side)	2.00 EA	45.58	1.43	27.76	120.35	(0.00)	120.35
307. Clean cold air return cover	1.00 EA	11.32	0.00	3.40	14.72	(0.00)	14.72
308. Clean window unit (per side) 3 - 9 SF	1.00 EA	13.73	0.00	4.12	17.85	(0.00)	17.85
309. Add for glued down application over concrete substrate	1.00 SF	1.29	0.07	0.40	1.76	(0.00)	1.76
Current price for material needed							
508. Batt insulation - 4" - R13 - paper / foil faced	92.00 SF	0.94	4.19	27.20	117.87	(0.00)	117.87
531. Base cap	46.00 LF	2.13	3.09	30.32	131.39	(0.00)	131.39

Elias Brothers Roofing Division
4627 Arnold Avenue, Suite #201
Naples, FL 34104
Office: 239-293-2442
elizabeth@ebgcontracting.com

CONTINUED - Bedroom 1

DESCRIPTION	QUANTITY	UNIT PRICE	TAX	O&P	RCV	DEPREC.	ACV
552. Seal/prime then paint the walls (2 coats)	368.00 SF	1.13	5.92	126.54	548.30	(0.00)	548.30
572. Floor preparation for resilient flooring	144.33 SF	0.77	1.01	33.64	145.78	(0.00)	145.78
Totals: Bedroom 1			149.34	1,493.08	6,469.99	0.00	6,469.99



Bedroom Clst

Height: 8'

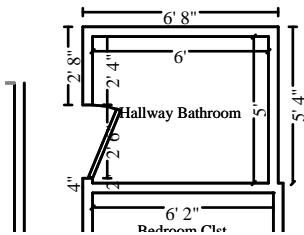
137.33 SF Walls	14.90 SF Ceiling
152.24 SF Walls & Ceiling	14.90 SF Floor
1.66 SY Flooring	17.17 LF Floor Perimeter
17.17 LF Ceil. Perimeter	

DESCRIPTION	QUANTITY	UNIT PRICE	TAX	O&P	RCV	DEPREC.	ACV
310. Bamboo flooring - engineered - pre-finished	17.14 SF	10.70	7.83	57.36	248.59	(0.00)	248.59
Current price for material needed							
311. Mask and prep for paint - plastic, paper, tape (per LF)	17.17 LF	1.59	0.32	8.30	35.92	(0.00)	35.92
312. 1/2" - drywall per LF - up to 2' tall	17.17 LF	14.67	1.75	76.08	329.71	(0.00)	329.71
313. Baseboard - 5 1/4"	17.17 LF	5.66	3.39	30.18	130.75	(0.00)	130.75
314. Paint baseboard - two coats	17.17 LF	1.69	0.20	8.76	37.98	(0.00)	37.98
315. Apply plant-based anti-microbial agent to the floor	14.90 SF	0.33	0.05	1.50	6.47	(0.00)	6.47
316. Final cleaning - construction - Residential	14.90 SF	0.34	0.00	1.52	6.59	(0.00)	6.59
317. Closet shelf and rod package - Detach & reset	17.17 LF	14.30	0.00	73.66	319.19	(0.00)	319.19
319. Bifold door set - full louvered - Double	1.00 EA	501.37	24.83	157.86	684.06	(0.00)	684.06
320. Paint full lvr'd bifold door set - slab - 2 coats -per side	2.00 EA	95.65	2.81	58.24	252.35	(0.00)	252.35
321. Mask and cover light fixture	1.00 EA	16.59	0.05	5.00	21.64	(0.00)	21.64
325. Door opening (jamb & casing) - 32"to36"wide - stain grade	1.00 EA	246.64	12.51	77.76	336.91	(0.00)	336.91
Current pricing for material needed							
509. Batt insulation - 4" - R13 - paper / foil faced	34.33 SF	0.94	1.56	10.14	43.97	(0.00)	43.97

Elias Brothers Roofing Division
4627 Arnold Avenue, Suite #201
Naples, FL 34104
Office: 239-293-2442
elizabeth@ebgcontracting.com

CONTINUED - Bedroom Clst

DESCRIPTION	QUANTITY	UNIT PRICE	TAX	O&P	RCV	DEPREC.	ACV
532. Base cap	17.17 LF	2.13	1.15	11.32	49.04	(0.00)	49.04
553. Seal/prime then paint the walls (2 coats)	137.33 SF	1.13	2.21	47.22	204.61	(0.00)	204.61
573. Floor preparation for resilient flooring	14.90 SF	0.77	0.10	3.48	15.05	(0.00)	15.05
Totals: Bedroom Clst			58.76	628.38	2,722.83	0.00	2,722.83



Hallway Bathroom

Height: 8'

- 176.00 SF Walls
- 206.00 SF Walls & Ceiling
- 3.33 SY Flooring
- 22.00 LF Ceil. Perimeter
- 30.00 SF Ceiling
- 30.00 SF Floor
- 22.00 LF Floor Perimeter

DESCRIPTION	QUANTITY	UNIT PRICE	TAX	O&P	RCV	DEPREC.	ACV
330. Bamboo flooring - engineered - pre-finished	34.50 SF	10.70	15.77	115.48	500.40	(0.00)	500.40
Current price for material needed							
331. Toilet seat	1.00 EA	59.54	2.20	18.52	80.26	(0.00)	80.26
332. Toilet paper holder	1.00 EA	28.82	0.87	8.90	38.59	(0.00)	38.59
333. Detach & Reset Towel bar	2.00 EA	20.80	0.00	12.48	54.08	(0.00)	54.08
334. Outlet	5.00 EA	21.39	0.60	32.26	139.81	(0.00)	139.81
335. Light fixture - Detach & reset	1.00 EA	75.68	0.00	22.70	98.38	(0.00)	98.38
336. Seal & paint vanity - inside and out	5.00 LF	43.94	1.97	66.52	288.19	(0.00)	288.19
337. Vanity	4.00 LF	244.49	53.68	309.48	1,341.12	(0.00)	1,341.12
338. Remove Bathtub	1.00 EA	107.59	0.00	32.28	139.87	(0.00)	139.87
339. Door knob - interior	1.00 EA	46.10	1.50	14.30	61.90	(0.00)	61.90
340. Contents - move out then reset - Small room	1.00 EA	57.84	0.00	17.36	75.20	(0.00)	75.20
341. P-trap assembly - ABS (plastic)	1.00 EA	71.63	0.56	21.64	93.83	(0.00)	93.83
342. Final cleaning - construction - Residential	30.00 SF	0.34	0.00	3.06	13.26	(0.00)	13.26
343. Apply plant-based anti-microbial agent to the floor	30.00 SF	0.33	0.11	3.02	13.03	(0.00)	13.03
344. Clean light bar	2.00 EA	23.96	0.01	14.38	62.31	(0.00)	62.31
345. Clean mirror - Heavy	18.00 SF	1.28	0.01	6.92	29.97	(0.00)	29.97



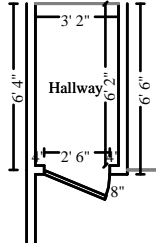
Elias Brothers General Contractor, Inc

Elias Brothers Roofing Division
 4627 Arnold Avenue, Suite #201
 Naples, FL 34104
 Office: 239-293-2442
 elizabeth@ebgcontracting.com

CONTINUED - Hallway Bathroom

DESCRIPTION	QUANTITY	UNIT PRICE	TAX	O&P	RCV	DEPREC.	ACV
346. Paint door slab only - 2 coats (per side)	2.00 EA	44.70	1.43	27.24	118.07	(0.00)	118.07
347. Interior door unit - Standard grade	1.00 EA	323.86	17.20	102.32	443.38	(0.00)	443.38
348. Paint baseboard - two coats	22.00 LF	1.69	0.26	11.24	48.68	(0.00)	48.68
349. Sink - single	1.00 EA	290.98	11.47	90.74	393.19	(0.00)	393.19
350. Baseboard - 3 1/4"	22.00 LF	4.53	2.94	30.78	133.38	(0.00)	133.38
351. Clean cold air return cover	1.00 EA	11.32	0.00	3.40	14.72	(0.00)	14.72
352. 1/2" - drywall per LF - up to 2' tall	22.00 LF	14.67	2.25	97.50	422.49	(0.00)	422.49
Current pricing for material needed							
353. Toilet	1.00 EA	547.59	21.30	170.68	739.57	(0.00)	739.57
354. Mask and prep for paint - plastic, paper, tape (per LF)	22.00 LF	1.59	0.42	10.62	46.02	(0.00)	46.02
356. Clean window unit (per side) 3 - 9 SF	1.00 EA	13.73	0.00	4.12	17.85	(0.00)	17.85
357. Clean sill - tile	3.00 LF	1.24	0.00	1.12	4.84	(0.00)	4.84
358. Detach & Reset Light fixture	1.00 EA	75.68	0.00	22.70	98.38	(0.00)	98.38
359. Detach & Reset Mirror - 1/8" plate glass	18.00 SF	7.59	0.00	40.98	177.60	(0.00)	177.60
360. Toilet flange	1.00 EA	282.77	6.44	86.78	375.99	(0.00)	375.99
361. Angle stop valve	1.00 EA	38.98	0.50	11.86	51.34	(0.00)	51.34
362. Clean bathroom fan	1.00 EA	36.63	0.00	10.98	47.61	(0.00)	47.61
363. Clean light fixture	1.00 EA	13.78	0.00	4.14	17.92	(0.00)	17.92
364. 5/8" blueboard - hung only (no tape or finish)	30.00 SF	2.14	1.09	19.58	84.87	(0.00)	84.87
369. Door opening (jamb & casing) - 32"to36"wide - paint grade	1.00 EA	202.61	9.42	63.60	275.63	(0.00)	275.63
Price for material with Professional installation							
370. Tub/shower faucet	1.00 EA	332.08	9.80	102.56	444.44	(0.00)	444.44
371. Add for glued down application over concrete substrate	1.00 SF	1.29	0.07	0.40	1.76	(0.00)	1.76
Current price for material needed							
510. Batt insulation - 4" - R13 - paper / foil faced	44.00 SF	0.94	2.00	13.00	56.36	(0.00)	56.36
533. Base cap	22.00 LF	2.13	1.48	14.50	62.84	(0.00)	62.84
554. Seal/prime then paint the walls (2 coats)	176.00 SF	1.13	2.83	60.50	262.21	(0.00)	262.21
574. Floor preparation for resilient flooring	30.00 SF	0.77	0.21	7.00	30.31	(0.00)	30.31
Totals: Hallway Bathroom			168.39	1,707.64	7,399.65	0.00	7,399.65

Elias Brothers Roofing Division
4627 Arnold Avenue, Suite #201
Naples, FL 34104
Office: 239-293-2442
elizabeth@ebgcontracting.com



Hallway

Height: 8'

124.00 SF Walls
143.53 SF Walls & Ceiling
2.17 SY Flooring
15.50 LF Ceil. Perimeter

19.53 SF Ceiling
19.53 SF Floor
15.50 LF Floor Perimeter

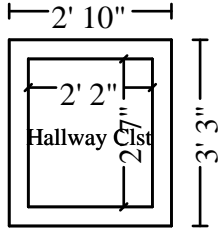
Missing Wall

3' 2" X 8'

Opens into Exterior

DESCRIPTION	QUANTITY	UNIT PRICE	TAX	O&P	RCV	DEPREC.	ACV
374. Bamboo flooring - engineered - pre-finished	22.46 SF	10.70	10.27	75.18	325.77	(0.00)	325.77
Current price for material needed							
375. Mask and prep for paint - plastic, paper, tape (per LF)	15.50 LF	1.59	0.29	7.48	32.42	(0.00)	32.42
376. 1/2" - drywall per LF - up to 2' tall	15.50 LF	14.67	1.58	68.70	297.67	(0.00)	297.67
Per EBG GC Pricing							
377. Baseboard - 5 1/4"	15.50 LF	5.66	3.06	27.24	118.03	(0.00)	118.03
378. Paint baseboard - two coats	15.50 LF	1.69	0.18	7.92	34.30	(0.00)	34.30
380. Apply plant-based anti-microbial agent to the floor	19.53 SF	0.33	0.07	1.96	8.47	(0.00)	8.47
381. Final cleaning - construction - Residential	19.53 SF	0.34	0.00	2.00	8.64	(0.00)	8.64
383. Drywall patch / small repair, ready for paint	2.00 EA	119.26	0.50	71.72	310.74	(0.00)	310.74
384. Mask and cover light fixture	1.00 EA	16.59	0.05	5.00	21.64	(0.00)	21.64
389. Add for glued down application over concrete substrate	1.00 SF	1.29	0.07	0.40	1.76	(0.00)	1.76
Current price for material needed							
511. Batt insulation - 4" - R13 - paper / foil faced	31.00 SF	0.94	1.41	9.16	39.71	(0.00)	39.71
534. Base cap	15.50 LF	2.13	1.04	10.22	44.28	(0.00)	44.28
555. Seal/prime then paint the walls (2 coats)	124.00 SF	1.13	2.00	42.64	184.76	(0.00)	184.76
575. Floor preparation for resilient flooring	19.53 SF	0.77	0.14	4.56	19.74	(0.00)	19.74
Totals: Hallway			20.66	334.18	1,447.93	0.00	1,447.93

Elias Brothers Roofing Division
4627 Arnold Avenue, Suite #201
Naples, FL 34104
Office: 239-293-2442
elizabeth@ebgcontracting.com



Hallway Clst

Height: 8'

76.00 SF Walls	5.60 SF Ceiling
81.60 SF Walls & Ceiling	5.60 SF Floor
0.62 SY Flooring	9.50 LF Floor Perimeter
9.50 LF Ceil. Perimeter	

DESCRIPTION	QUANTITY	UNIT PRICE	TAX	O&P	RCV	DEPREC.	ACV
390. Bamboo flooring - engineered - pre-finished	6.44 SF	10.70	2.94	21.56	93.41	(0.00)	93.41
Current price for material needed							
391. Mask and prep for paint - plastic, paper, tape (per LF)	9.50 LF	1.59	0.18	4.60	19.89	(0.00)	19.89
392. 1/2" - drywall per LF - up to 2' tall	9.50 LF	14.67	0.97	42.12	182.46	(0.00)	182.46
Fair market pricing for material needed							
393. Clean closet organizer and rod	1.00 EA	48.90	0.09	14.70	63.69	(0.00)	63.69
394. Apply plant-based anti-microbial agent to the floor	5.60 SF	0.33	0.02	0.56	2.43	(0.00)	2.43
395. Final cleaning - construction - Residential	5.60 SF	0.34	0.00	0.58	2.48	(0.00)	2.48
396. Contents - move out then reset - Small room	1.00 EA	57.84	0.00	17.36	75.20	(0.00)	75.20
397. Closet shelf and rod package - Detach & reset	9.50 LF	14.30	0.00	40.76	176.61	(0.00)	176.61
398. Paint bifold door set - slab only - 2 coats (per side)	1.00 EA	60.41	1.40	18.54	80.35	(0.00)	80.35
401. Detach & Reset Closet shelf and rod package	5.00 LF	14.30	0.00	21.46	92.96	(0.00)	92.96
497. Bifold door - full louvered - Single	1.00 EA	250.69	12.42	78.92	342.03	(0.00)	342.03
403. Paint full lvr'd bifold door set - slab - 2 coats -per side	2.00 EA	95.65	2.81	58.24	252.35	(0.00)	252.35
404. Mask and cover light fixture	1.00 EA	16.59	0.05	5.00	21.64	(0.00)	21.64
512. Batt insulation - 4" - R13 - paper / foil faced	19.00 SF	0.94	0.86	5.62	24.34	(0.00)	24.34
535. Base cap	9.50 LF	2.13	0.64	6.28	27.16	(0.00)	27.16
556. Seal/prime then paint the walls (2 coats)	76.00 SF	1.13	1.22	26.12	113.22	(0.00)	113.22
576. Floor preparation for resilient flooring	5.60 SF	0.77	0.04	1.32	5.67	(0.00)	5.67
Totals: Hallway Clst			23.64	363.74	1,575.89	0.00	1,575.89

Elias Brothers Roofing Division
4627 Arnold Avenue, Suite #201
Naples, FL 34104
Office: 239-293-2442
elizabeth@ebgcontracting.com



Living Room/Dining Room

Height: 8'

611.20 SF Walls	532.80 SF Ceiling
1144.00 SF Walls & Ceiling	532.80 SF Floor
59.20 SY Flooring	76.40 LF Floor Perimeter
76.40 LF Ceil. Perimeter	

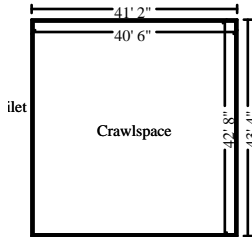
Missing Wall

34' 11 3/4" X 8'

Opens into Exterior

DESCRIPTION	QUANTITY	UNIT PRICE	TAX	O&P	RCV	DEPREC.	ACV
410. Bamboo flooring - engineered - pre-finished	612.72 SF	10.70	280.07	2,050.86	8,887.03	(0.00)	8,887.03
Current price for material needed							
411. Paint door/window trim & jamb - 2 coats (per side)	1.00 EA	37.84	0.42	11.48	49.74	(0.00)	49.74
416. Drywall patch / small repair, ready for paint	4.00 EA	119.26	0.99	143.42	621.45	(0.00)	621.45
418. Final cleaning - construction - Residential	532.80 SF	0.34	0.00	54.34	235.49	(0.00)	235.49
419. Contents - move out then reset - Extra large room	1.00 EA	231.15	0.00	69.34	300.49	(0.00)	300.49
420. Apply plant-based anti-microbial agent to the floor	532.80 SF	0.33	1.86	53.30	230.98	(0.00)	230.98
421. Outlet	5.00 EA	21.39	0.60	32.26	139.81	(0.00)	139.81
422. Paint baseboard - two coats	76.40 LF	1.69	0.91	39.02	169.05	(0.00)	169.05
423. Baseboard - 5 1/4"	76.40 LF	5.66	15.08	134.24	581.74	(0.00)	581.74
425. 1/2" - drywall per LF - up to 2' tall	76.40 LF	14.67	7.81	338.58	1,467.18	(0.00)	1,467.18
Per EBG GC Pricing							
426. Mask and cover light fixture	2.00 EA	16.59	0.11	10.00	43.29	(0.00)	43.29
427. Mask and prep for paint - plastic, paper, tape (per LF)	53.83 LF	1.59	1.02	25.98	112.59	(0.00)	112.59
428. Clean ceiling fan and light	1.00 EA	33.86	0.00	10.16	44.02	(0.00)	44.02
429. Add for glued down application over concrete substrate	1.00 SF	1.29	0.07	0.40	1.76	(0.00)	1.76
Current price for material needed							
513. Batt insulation - 4" - R13 - paper / foil faced	152.80 SF	0.94	6.95	45.16	195.74	(0.00)	195.74
518. Door opening (jamb & casing) - 60" or wider - paint grade	1.00 EA	274.92	12.76	86.30	373.98	(0.00)	373.98
519. 6-0 8-0 vinyl sliding patio door - High grade	2.00 EA	5,000.00	205.54	3,061.66	13,267.20	(0.00)	13,267.20
536. Base cap	76.40 LF	2.13	5.13	50.36	218.22	(0.00)	218.22
557. Seal/prime then paint the walls (2 coats)	611.20 SF	1.13	9.84	210.16	910.66	(0.00)	910.66
577. Floor preparation for resilient flooring	532.80 SF	0.77	3.73	124.20	538.19	(0.00)	538.19
Totals: Living Room/Dining Room			552.89	6,551.22	28,388.61	0.00	28,388.61

Elias Brothers Roofing Division
4627 Arnold Avenue, Suite #201
Naples, FL 34104
Office: 239-293-2442
elizabeth@ebgcontracting.com

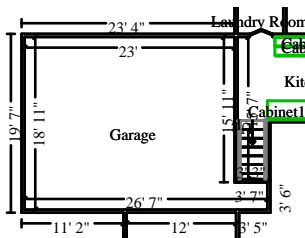


Crawlspace

Height: 8'

1330.67 SF Walls	1728.00 SF Ceiling
3058.67 SF Walls & Ceiling	1728.00 SF Floor
192.00 SY Flooring	166.33 LF Floor Perimeter
166.33 LF Ceil. Perimeter	

DESCRIPTION	QUANTITY	UNIT PRICE	TAX	O&P	RCV	DEPREC.	ACV
487. Dehumidifier (per 24 hr period) - 160+ ppd - No monitor.	2.00 EA	133.00	0.00	79.80	345.80	(0.00)	345.80
488. Batt insulation - Add-on for confined spaces	1,728.00 SF	0.37	0.00	191.80	831.16	(0.00)	831.16
489. Moisture protection - vapor barrier seam tape	1,728.00 SF	0.14	3.63	73.66	319.21	(0.00)	319.21
490. Moisture protection for crawl space - visqueen - 10 mil	1,728.00 SF	0.46	13.31	242.46	1,050.65	(0.00)	1,050.65
491. Vapor barrier - 15# felt	1,728.00 SF	0.36	8.47	189.16	819.71	(0.00)	819.71
492. Clean foundation wall	332.67 SF	0.71	0.47	71.00	307.67	(0.00)	307.67
493. Batt insulation - 4" - R13 - paper / foil faced	1,330.67 SF	0.94	60.55	393.40	1,704.78	(0.00)	1,704.78
494. Bid Item	1.00 EA	850.00	0.00	0.00	850.00	(0.00)	850.00
PPE and Professional Ventilation Equipment for working conditions							
495. Moisture protection for crawl space - hydrated lime	1,728.00 SF	1.04	25.40	546.76	2,369.28	(0.00)	2,369.28
496. Negative air fan/Air scrubber (24 hr period) - No monit.	2.00 DA	70.00	0.00	42.00	182.00	(0.00)	182.00
Per OSHA Requirement							
537. Base cap	166.33 LF	2.13	11.18	109.64	475.10	(0.00)	475.10
558. Seal/prime then paint the walls (2 coats)	1,330.67 SF	1.13	21.42	457.52	1,982.60	(0.00)	1,982.60
Totals: Crawlspace			144.43	2,397.20	11,237.96	0.00	11,237.96

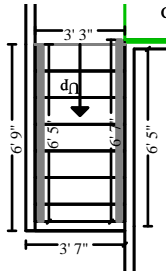


Garage

Height: 8'

716.53 SF Walls	445.83 SF Ceiling
1162.37 SF Walls & Ceiling	445.83 SF Floor
49.54 SY Flooring	91.00 LF Floor Perimeter
91.00 LF Ceil. Perimeter	

Elias Brothers Roofing Division
4627 Arnold Avenue, Suite #201
Naples, FL 34104
Office: 239-293-2442
elizabeth@ebgcontracting.com



Subroom: Stairs (1)

Height: 12' 2"

129.00 SF Walls	20.85 SF Ceiling
149.85 SF Walls & Ceiling	38.49 SF Floor
4.28 SY Flooring	15.11 LF Floor Perimeter
13.00 LF Ceil. Perimeter	

Missing Wall

3' 3" X 12' 2 3/8"

Opens into KITCHEN

DESCRIPTION	QUANTITY	UNIT PRICE	TAX	O&P	RCV	DEPREC.	ACV
436. 1/2" - drywall per LF - up to 4' tall	106.11 LF	20.85	19.98	669.72	2,902.09	(0.00)	2,902.09
438. Mask and prep for paint - plastic, paper, tape (per LF)	104.00 LF	1.59	1.97	50.20	217.53	(0.00)	217.53
439. Overhead door & hardware - 16' x 7'	1.00 EA	1,805.27	95.64	570.28	2,471.19	(0.00)	2,471.19
440. Patio door screen, 48" wide	4.00 EA	115.76	30.76	148.14	641.94	(0.00)	641.94
441. Water heater overflow drain pan	1.00 EA	56.09	1.70	17.34	75.13	(0.00)	75.13
442. Flexible gas supply line connector - 1/2" - up to 24"	1.00 EA	34.20	1.54	10.72	46.46	(0.00)	46.46
443. Seal & paint wood beam	240.00 SF	2.29	4.37	166.20	720.17	(0.00)	720.17
444. 2" x 4" lumber (.667 BF per LF)	150.00 LF	3.39	10.92	155.84	675.26	(0.00)	675.26
445. Sheathing - OSB - 5/8"	240.00 SF	2.01	15.29	149.30	646.99	(0.00)	646.99
446. 2" x 6" lumber (1 BF per LF)	40.00 LF	3.89	4.31	47.98	207.89	(0.00)	207.89
447. 2" x 2" lumber - treated (.33 BF per LF)	130.00 LF	2.75	5.73	108.98	472.21	(0.00)	472.21
448. 4" x 4" x 8' wood post - turned	8.00 EA	115.88	41.30	290.52	1,258.86	(0.00)	1,258.86
449. Water heater - 40 gallon - Gas - 6 yr	1.00 EA	1,144.44	47.22	357.50	1,549.16	(0.00)	1,549.16
450. Seal & paint single garage door opening & trim	1.00 EA	116.88	0.65	35.26	152.79	(0.00)	152.79
451. Final cleaning - construction - Residential	484.32 SF	0.34	0.00	49.40	214.07	(0.00)	214.07
528. Base cap	106.11 LF	2.13	7.13	69.94	303.08	(0.00)	303.08
549. Seal/prime then paint the walls (2 coats)	845.53 SF	1.13	13.61	290.72	1,259.78	(0.00)	1,259.78
Totals: Garage			302.12	3,188.04	13,814.60	0.00	13,814.60
Total: Main Level			3,962.11	43,941.66	191,260.66	0.00	191,260.66

Labor Minimums Applied

DESCRIPTION	QUANTITY	UNIT PRICE	TAX	O&P	RCV	DEPREC.	ACV
468. Carpet labor minimum	1.00 EA	75.18	0.00	22.56	97.74	(0.00)	97.74
453. Toilet & bath accessory labor minimum	1.00 EA	124.96	0.00	37.48	162.44	(0.00)	162.44



Elias Brothers General Contractor, Inc

Elias Brothers Roofing Division
4627 Arnold Avenue, Suite #201
Naples, FL 34104
Office: 239-293-2442
elizabeth@ebgcontracting.com

CONTINUED - Labor Minimums Applied

DESCRIPTION	QUANTITY	UNIT PRICE	TAX	O&P	RCV	DEPREC.	ACV
454. Heat, vent, & air cond. labor minimum	1.00 EA	227.63	0.00	68.28	295.91	(0.00)	295.91
455. Mirror/shower door labor minimum	1.00 EA	40.84	0.00	12.26	53.10	(0.00)	53.10
456. Stone floor covering labor minimum	1.00 EA	188.75	0.00	56.62	245.37	(0.00)	245.37
539. Plaster labor minimum	1.00 EA	588.80	0.00	176.64	765.44	(0.00)	765.44
Totals: Labor Minimums Applied			0.00	373.84	1,620.00	0.00	1,620.00
Line Item Totals: 17601CAPTIVA_RECON			3,962.11	44,315.50	192,880.66	0.00	192,880.66

Grand Total Areas:

6,873.74 SF Walls	3,872.91 SF Ceiling	10,746.65 SF Walls and Ceiling
3,890.54 SF Floor	432.28 SY Flooring	782.43 LF Floor Perimeter
0.00 SF Long Wall	0.00 SF Short Wall	780.32 LF Ceil. Perimeter
3,890.54 Floor Area	4,108.53 Total Area	6,673.54 Interior Wall Area
6,349.99 Exterior Wall Area	697.72 Exterior Perimeter of Walls	
0.00 Surface Area	0.00 Number of Squares	0.00 Total Perimeter Length
0.00 Total Ridge Length	0.00 Total Hip Length	



Elias Brothers General Contractor, Inc

Elias Brothers Roofing Division
4627 Arnold Avenue, Suite #201
Naples, FL 34104
Office: 239-293-2442
elizabeth@ebgcontracting.com

Summary

Line Item Total	144,603.05
Material Sales Tax	3,930.95
Storage Rental Tax	31.16
Subtotal	148,565.16
Overhead	22,157.75
Profit	22,157.75
Replacement Cost Value	\$192,880.66
Net Claim	\$192,880.66

Elizabeth Brath
Estimator



Elias Brothers General Contractor, Inc

Elias Brothers Roofing Division
4627 Arnold Avenue, Suite #201
Naples, FL 34104
Office: 239-293-2442
elizabeth@ebgcontracting.com

Recap of Taxes, Overhead and Profit

	Overhead (15%)	Profit (15%)	Material Sales Tax (7%)	Laundering Tax (2%)	Manuf. Home Tax (6%)	Storage Rental Tax (7%)
Line Items	22,157.75	22,157.75	3,930.95	0.00	0.00	31.16
Total	22,157.75	22,157.75	3,930.95	0.00	0.00	31.16