



## Elias Brothers General Contractor, Inc

---

Elias Brothers GC Division  
4627 Arnold Avenue, Suite #201  
Naples, FL 34104  
Office: 239-293-2442  
elizabeth@ebgcontracting.com

Client: Island Park 5.2  
Property: 17603 Captiva  
Fort Myers, FL 33908

Operator: ELIZABET

Estimator: Elizabeth Brath  
Position: Estimator  
Company: Elias Brothers Contracting  
Business: 4627 Arnold Ave, Ste 201  
Naples Florida

Business: (239) 293-2442  
E-mail: elizabeth@ebgcontracting.com

Type of Estimate: Flood  
Date Entered: 1/8/2023 Date Assigned:

Price List: FLFM8X\_JAN23  
Labor Efficiency: Restoration/Service/Remodel  
Estimate: 17603\_CAP\_RECON

*We have been hired as the contractor to perform mitigation/construction/tarp/inventory/clean up services that are prescribed by the above referenced claim. It is our goal to follow all of your prescriptions to complete the repairs and /or the services. Purpose These guidelines were developed to ensure that all water incursions are handled in a professional manner which includes the latest information and procedures available. This document is revised ELIAS BROTHER GROUP Boulder Water Damage guidance document. The purpose of the document is to provide a consistent approach to outlining which buildings and materials have been impacted and what actions are necessary to bring the buildings back online as quickly and safely as possible. Every effort will be made to ensure the health and safety of all in a timely fashion.*

*We have been hired as the contractor to perform mitigation/construction/tarp/inventory/clean up services that are prescribed by the above referenced claim. It is our goal to follow all of your prescriptions to complete the repairs and /or the services. Purpose These guidelines were developed to ensure that all water incursions are handled in a professional manner which includes the latest information and procedures available. This document is revised ELIAS BROTHER GROUP Boulder Water Damage guidance document. The purpose of the document is to provide a consistent approach to outlining which buildings and materials have been impacted and what actions are necessary to bring the buildings back online as quickly and safely as possible. Every effort will be made to ensure the health and safety of all in a timely fashion.*

*Adopted and Required Building Codes: The 2012 International Residential Code (IRC) and the 2012 International Energy Conservation Code (IECC) have been adopted (and is REQUIRED) by the City of , (See attached corresponding code documentation in the images section, following this estimate). The 2012 International Code Council (ICC) are the rules that govern this estimate. Overhead and Profit (O&P): We are a true general contractor and we have been tasked with performing all tasks in this project, associated with several trades. This project requires the use of subcontractors for all of its tasks listed. We coordinate all of these subcontractors and their tasks, over the course of many weeks (planning and assessing included). It requires several trips made by many personnel. We finance the costs of this project, order materials (including special order), pick up materials, deliver materials, etc. This project involves many trades and requires extensive coordination, including, but not limited to: roofing, gutters, painting, mechanical, fencing, drywall, insulation, etc. This project also requires extensive INTERIOR repairs. The level of complexity and/or coordination required of a general contractor to carry out this project definitely met and exceeded any threshold necessary to obtain Overhead and Profit (O&P). It has been assessed to this estimate accordingly*

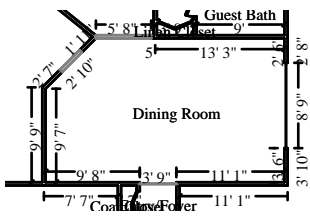
Elias Brothers GC Division  
4627 Arnold Avenue, Suite #201  
Naples, FL 34104  
Office: 239-293-2442  
elizabeth@ebgcontracting.com

**17603\_CAP\_RECON**

**Main Level**

**Main Level**

DESCRIPTION	QUANTITY	UNIT PRICE	TAX	O&P	RCV	DEPREC.	ACV
990. Drywall Repair - Minimum Charge - Labor and Material	1.00 EA	628.28	1.21	188.84	818.33	(0.00)	818.33
991. Dumpster load - Approx. 30 yards, 5-7 tons of debris	1.00 EA	1,200.00	0.00	360.00	1,560.00	(0.00)	1,560.00
992. Temporary toilet - Minimum rental charge	1.00 EA	110.00	0.00	33.00	143.00	(0.00)	143.00
993. Electrical (Bid Item)	1.00 EA	1,500.00	0.00	450.00	1,950.00	(0.00)	1,950.00
994. Plumbing (Bid Item)	1.00 EA	0.00	0.00	0.00	0.00	(0.00)	0.00
995. Light bulb - LED A19 - up to 500 lm - material only	14.00 EA	6.14	5.16	27.32	118.44	(0.00)	118.44
996. Job-site moving/storage container - 20' long - per month	2.00 MO	222.60	26.71	141.58	613.49	(0.00)	613.49
997. Detach & Reset Smoke detector	8.00 EA	61.60	0.00	147.84	640.64	(0.00)	640.64
998. Detach & Reset Window blind - PVC - 1" - 20.1 to 32 SF	8.00 EA	43.59	0.00	104.62	453.34	(0.00)	453.34
1,016. Residential Supervision / Project Management - per hour	96.00 HR	75.60	0.00	2,177.28	9,434.88	(0.00)	9,434.88
1,017. Administrative/supervisor labor/digitized filing charge (Bid Item)*	1.00 EA	1,200.00	0.00	360.00	1,560.00	(0.00)	1,560.00
<b>Total: Main Level</b>			<b>33.08</b>	<b>3,990.48</b>	<b>17,292.12</b>	<b>0.00</b>	<b>17,292.12</b>



**Dining Room**

**Height: 10'**

649.26 SF Walls	348.73 SF Ceiling
997.99 SF Walls & Ceiling	348.73 SF Floor
38.75 SY Flooring	63.23 LF Floor Perimeter
69.82 LF Ceil. Perimeter	

**Missing Wall - Goes to Floor**

**2' 10" X 6' 8"**

**Opens into KITCHEN**

**Missing Wall**

**3' 9" X 10'**

**Opens into ENTRY\_FOYER**

**Missing Wall**

**5' 8" X 10'**

**Opens into LIVING\_ROOM**

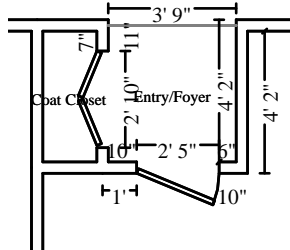
DESCRIPTION	QUANTITY	UNIT PRICE	TAX	O&P	RCV	DEPREC.	ACV
466. Mask and prep for paint - plastic, paper, tape (per LF)	69.82 LF	1.59	1.13	33.64	145.78	(0.00)	145.78
467. 1/2" - drywall per LF - up to 2' tall	63.23 LF	13.34	5.80	254.78	1,104.07	(0.00)	1,104.07
<b>Per EBG GC Pricing</b>							
468. Baseboard - 5 1/4"	63.23 LF	5.76	11.04	112.58	487.82	(0.00)	487.82

Elias Brothers GC Division  
 4627 Arnold Avenue, Suite #201  
 Naples, FL 34104  
 Office: 239-293-2442  
 elizabeth@ebgcontracting.com

**CONTINUED - Dining Room**

DESCRIPTION	QUANTITY	UNIT PRICE	TAX	O&P	RCV	DEPREC.	ACV
469. Paint baseboard - two coats	63.23 LF	1.69	0.65	32.26	139.77	(0.00)	139.77
470. Clean ceiling fan and light - Heavy	1.00 EA	48.34	0.00	14.50	62.84	(0.00)	62.84
471. Apply plant-based anti-microbial agent to the floor	348.73 SF	0.33	1.05	34.84	150.97	(0.00)	150.97
472. Final cleaning - construction - Residential	348.73 SF	0.34	0.00	35.58	154.15	(0.00)	154.15
473. Contents - move out then reset - Extra large room	1.00 EA	231.15	0.00	69.34	300.49	(0.00)	300.49
474. Subfloor Bracing*	532.80 SF	4.15	132.67	703.14	3,046.93	(0.00)	3,046.93
475. Clean sill - tile	12.00 LF	1.24	0.01	4.46	19.35	(0.00)	19.35
476. Drywall patch / small repair, ready for paint	2.00 EA	119.26	0.42	71.68	310.62	(0.00)	310.62
477. Mask and cover light fixture	3.00 EA	16.59	0.14	14.98	64.89	(0.00)	64.89
479. Patio door screen, 48" wide	2.00 EA	115.45	13.18	73.24	317.32	(0.00)	317.32
480. Seal/prime then paint the walls (2 coats)	649.26 SF	1.13	8.96	222.78	965.40	(0.00)	965.40
485. Clean chandelier - with crystal - Heavy	1.00 EA	269.34	0.01	80.80	350.15	(0.00)	350.15
486. R&R Door opening (jamb & casing) - 60" or wider - paint grade	1.00 EA	284.92	10.93	88.76	384.61	(0.00)	384.61
<b>Current pricing for professional material needed</b>							
871. Fir subfloor - no finish	348.73 SF	8.00	75.95	859.74	3,725.53	(0.00)	3,725.53
909. Bid Item	1.00 EA	350.00	0.00	0.00	350.00	(0.00)	350.00
<b>Clean Chandelier heavy by with professional services</b>							
933. Tile floor covering - Premium grade	401.04 SF	16.65	270.22	2,084.26	9,031.80	(0.00)	9,031.80
934. 1/4" Cement board	348.73 SF	3.91	30.97	418.36	1,812.86	(0.00)	1,812.86
935. Tile/stone sealer	348.73 SF	0.84	6.70	89.90	389.53	(0.00)	389.53
1,000. Batt insulation - 4" - R13 - paper / foil faced	162.32 SF	0.95	6.33	48.16	208.69	(0.00)	208.69
1,018. Base shoe	63.23 LF	1.92	2.88	37.28	161.56	(0.00)	161.56
1,035. R&R 6-0 6-8 vinyl sliding patio door - High grade	2.00 EA	2,058.21	146.48	1,278.86	5,541.76	(0.00)	5,541.76
<b>Totals: Dining Room</b>			<b>725.52</b>	<b>6,663.92</b>	<b>29,226.89</b>	<b>0.00</b>	<b>29,226.89</b>

Elias Brothers GC Division  
4627 Arnold Avenue, Suite #201  
Naples, FL 34104  
Office: 239-293-2442  
elizabeth@ebgcontracting.com



**Entry/Foyer**

**Height: 8'**

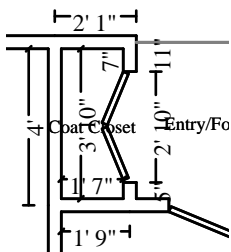
96.67 SF Walls	15.00 SF Ceiling
111.67 SF Walls & Ceiling	15.00 SF Floor
1.67 SY Flooring	12.08 LF Floor Perimeter
12.08 LF Ceil. Perimeter	

**Missing Wall**

**3' 9" X 8'**

**Opens into DINING\_ROOM2**

DESCRIPTION	QUANTITY	UNIT PRICE	TAX	O&P	RCV	DEPREC.	ACV
487. R&R Door opening (jamb & casing) - 32"to36"wide - stain grade	1.00 EA	256.58	10.72	80.20	347.50	(0.00)	347.50
<b>Fair Market pricing for material needed</b>							
489. Drywall patch / small repair, ready for paint	4.00 EA	119.26	0.85	143.38	621.27	(0.00)	621.27
490. Door knob - interior	1.00 EA	46.10	1.28	14.22	61.60	(0.00)	61.60
491. R&R Exterior door - Deluxe grade - wood w/detail - pre-hung	1.00 EA	2,481.35	139.85	786.36	3,407.56	(0.00)	3,407.56
872. Fir subfloor - no finish	15.00 SF	8.00	3.27	36.98	160.25	(0.00)	160.25
899. Prime & paint door slab only - exterior (per side)	2.00 EA	54.14	1.98	33.08	143.34	(0.00)	143.34
932. Door lockset & deadbolt - exterior	1.00 EA	91.49	3.45	28.48	123.42	(0.00)	123.42
937. Tile floor covering - Premium grade	17.25 SF	16.65	11.62	89.64	388.47	(0.00)	388.47
938. 1/4" Cement board	15.00 SF	3.91	1.33	18.00	77.98	(0.00)	77.98
939. Tile/stone sealer	15.00 SF	0.84	0.29	3.86	16.75	(0.00)	16.75
1,001. Batt insulation - 4" - R13 - paper / foil faced	24.17 SF	0.95	0.94	7.16	31.06	(0.00)	31.06
1,019. Base shoe	12.08 LF	1.92	0.55	7.12	30.86	(0.00)	30.86
<b>Totals: Entry/Foyer</b>			<b>176.13</b>	<b>1,248.48</b>	<b>5,410.06</b>	<b>0.00</b>	<b>5,410.06</b>



**Coat Closet**

**Height: 8'**

86.67 SF Walls	6.07 SF Ceiling
92.74 SF Walls & Ceiling	6.07 SF Floor
0.67 SY Flooring	10.83 LF Floor Perimeter
10.83 LF Ceil. Perimeter	

DESCRIPTION	QUANTITY	UNIT PRICE	TAX	O&P	RCV	DEPREC.	ACV
492. Mask and prep for paint - plastic, paper, tape (per LF)	10.83 LF	1.59	0.18	5.22	22.62	(0.00)	22.62
493. 1/2" - drywall per LF - up to 2' tall	10.83 LF	13.34	0.99	43.64	189.10	(0.00)	189.10

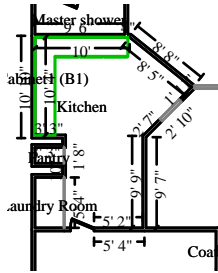
**Fair market pricing for material needed**

Elias Brothers GC Division  
 4627 Arnold Avenue, Suite #201  
 Naples, FL 34104  
 Office: 239-293-2442  
 elizabeth@ebgcontracting.com

**CONTINUED - Coat Closet**

DESCRIPTION	QUANTITY	UNIT PRICE	TAX	O&P	RCV	DEPREC.	ACV
494. Clean closet organizer and rod	1.00 EA	48.90	0.08	14.70	63.68	(0.00)	63.68
495. Apply plant-based anti-microbial agent to the floor	6.07 SF	0.33	0.02	0.60	2.62	(0.00)	2.62
496. Final cleaning - construction - Residential	6.07 SF	0.34	0.00	0.62	2.68	(0.00)	2.68
497. Contents - move out then reset - Small room	1.00 EA	57.84	0.00	17.36	75.20	(0.00)	75.20
498. Closet shelf and rod package - Detach & reset	10.83 LF	14.30	0.00	46.46	201.33	(0.00)	201.33
499. Paint bifold door set - slab only - 2 coats (per side)	2.00 EA	60.41	2.41	36.96	160.19	(0.00)	160.19
500. R&R Bifold door set - Colonist - Double	1.00 EA	370.56	12.02	114.76	497.34	(0.00)	497.34
<b>Fair Market Pricing for Material and Labor needed</b>							
501. Subfloor Bracing*	5.60 SF	4.15	1.39	7.40	32.03	(0.00)	32.03
502. Detach & Reset Closet shelf and rod package	5.00 LF	14.34	0.00	21.52	93.22	(0.00)	93.22
505. Mask and cover light fixture	1.00 EA	16.59	0.05	5.00	21.64	(0.00)	21.64
506. Seal/prime then paint the walls (2 coats)	86.67 SF	1.13	1.20	29.74	128.88	(0.00)	128.88
873. Fir subfloor - no finish	6.07 SF	8.00	1.32	14.96	64.84	(0.00)	64.84
940. Tile floor covering - Premium grade	6.98 SF	16.65	4.70	36.28	157.20	(0.00)	157.20
941. 1/4" Cement board	6.07 SF	3.91	0.54	7.28	31.55	(0.00)	31.55
942. Tile/stone sealer	6.07 SF	0.84	0.12	1.58	6.80	(0.00)	6.80
1,002. Batt insulation - 4" - R13 - paper / foil faced	21.67 SF	0.95	0.85	6.44	27.88	(0.00)	27.88
1,020. Base shoe	10.83 LF	1.92	0.49	6.38	27.66	(0.00)	27.66
1,036. R&R Door opening (jamb & casing) - 32"to36"wide - paint grade	1.00 EA	212.55	8.08	66.20	286.83	(0.00)	286.83
1,037. Paint door/window trim & jamb - 2 coats (per side)	2.00 EA	37.84	0.72	22.92	99.32	(0.00)	99.32
<b>Totals: Coat Closet</b>			<b>35.16</b>	<b>506.02</b>	<b>2,192.61</b>	<b>0.00</b>	<b>2,192.61</b>

Elias Brothers GC Division  
4627 Arnold Avenue, Suite #201  
Naples, FL 34104  
Office: 239-293-2442  
elizabeth@ebgcontracting.com



**Kitchen**

**Height: 10'**

583.39 SF Walls	222.73 SF Ceiling
806.13 SF Walls & Ceiling	222.73 SF Floor
24.75 SY Flooring	57.39 LF Floor Perimeter
60.23 LF Ceil. Perimeter	

Missing Wall

**1' 8" X 10'**

**Opens into PANTRY**

Missing Wall

**5' 4" X 10'**

**Opens into LAUNDRY\_ROOM**

Missing Wall - Goes to Floor

**2' 10" X 6' 8"**

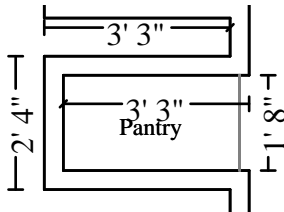
**Opens into DINING\_ROOM2**

DESCRIPTION	QUANTITY	UNIT PRICE	TAX	O&P	RCV	DEPREC.	ACV
511. Detach & Reset Cabinetry - upper (wall) units	20.00 LF	76.72	0.00	460.32	1,994.72	(0.00)	1,994.72
513. Refrigerator - side by side - 22 to 25 cf	1.00 EA	1,645.90	96.00	522.58	2,264.48	(0.00)	2,264.48
514. Cabinetry - lower (base) units	18.00 LF	271.81	236.41	1,538.70	6,667.69	(0.00)	6,667.69
515. Clean ceiling fan and light	1.00 EA	33.71	0.00	10.12	43.83	(0.00)	43.83
516. Clean cabinetry - upper - inside and out	20.00 LF	19.09	0.11	114.58	496.49	(0.00)	496.49
517. Garbage disposer	1.00 EA	280.22	8.39	86.58	375.19	(0.00)	375.19
519. Range - freestanding - gas	1.00 EA	1,188.77	60.00	374.64	1,623.41	(0.00)	1,623.41
520. Countertop - solid surface	20.00 SF	69.93	53.64	435.68	1,887.92	(0.00)	1,887.92
521. P-trap assembly - ABS (plastic)	1.00 EA	76.12	0.48	22.98	99.58	(0.00)	99.58
522. Apply plant-based anti-microbial agent to the floor	222.73 SF	0.34	0.67	22.92	99.32	(0.00)	99.32
523. Outlet	5.00 EA	18.25	0.51	27.54	119.30	(0.00)	119.30
524. Countertop subdeck - plywood	144.00 SF	4.29	15.29	189.90	822.95	(0.00)	822.95
525. Paint baseboard - two coats	57.39 LF	1.73	0.59	29.96	129.83	(0.00)	129.83
526. Baseboard - 5 1/4"	57.39 LF	5.76	10.02	102.18	442.77	(0.00)	442.77
527. Sink - double basin - Standard grade	1.00 EA	328.37	10.95	101.80	441.12	(0.00)	441.12
528. 1/2" - drywall per LF - up to 2' tall	57.39 LF	13.34	5.27	231.26	1,002.11	(0.00)	1,002.11
529. Mask and prep for paint - plastic, paper, tape (per LF)	60.23 LF	1.62	0.98	29.58	128.13	(0.00)	128.13
530. Dishwasher - High grade	1.00 EA	1,011.34	50.91	318.68	1,380.93	(0.00)	1,380.93
532. Sink faucet - Kitchen - High grade	1.00 EA	402.01	18.26	126.08	546.35	(0.00)	546.35
533. Angle stop valve	1.00 EA	41.23	0.43	12.48	54.14	(0.00)	54.14
534. Clean wall hanging - Light clean	3.00 EA	7.12	0.05	6.42	27.83	(0.00)	27.83
535. Refrig. water line - Disconnect & reconnect - with repairs	1.00 EA	111.10	1.34	33.74	146.18	(0.00)	146.18
536. Cabinet knob or pull	18.00 EA	10.27	3.82	56.60	245.28	(0.00)	245.28
537. Contents - move out then reset - Large room	1.00 EA	116.17	0.00	34.86	151.03	(0.00)	151.03
539. Clean countertop	6.00 SF	0.96	0.01	1.72	7.49	(0.00)	7.49
540. Drywall patch / small repair, ready for paint	4.00 EA	107.28	0.92	129.02	559.06	(0.00)	559.06

Elias Brothers GC Division  
4627 Arnold Avenue, Suite #201  
Naples, FL 34104  
Office: 239-293-2442  
elizabeth@ebgcontracting.com

**CONTINUED - Kitchen**

DESCRIPTION	QUANTITY	UNIT PRICE	TAX	O&P	RCV	DEPREC.	ACV
541. Seal/prime then paint the walls (2 coats)	583.39 SF	1.15	8.05	203.70	882.65	(0.00)	882.65
549. Paint cabinetry - lower - inside and out	16.00 LF	35.88	4.53	173.58	752.19	(0.00)	752.19
550. 4" backsplash for flat laid countertop	10.00 LF	9.52	3.25	29.54	127.99	(0.00)	127.99
874. Fir subfloor - no finish	222.73 SF	8.00	48.51	549.12	2,379.47	(0.00)	2,379.47
907. Clean microwave cart - Heavy clean	1.00 EA	37.21	0.05	11.18	48.44	(0.00)	48.44
943. Tile floor covering - Premium grade	256.14 SF	16.65	172.59	1,331.20	5,768.52	(0.00)	5,768.52
944. 1/4" Cement board	222.73 SF	3.91	19.78	267.20	1,157.85	(0.00)	1,157.85
945. Tile/stone sealer	222.73 SF	0.84	4.28	57.40	248.77	(0.00)	248.77
1,003. Batt insulation - 4" - R13 - paper / foil faced	145.85 SF	0.95	5.69	43.26	187.51	(0.00)	187.51
1,021. Base shoe	57.39 LF	1.92	2.62	33.84	146.65	(0.00)	146.65
<b>Totals: Kitchen</b>			<b>844.40</b>	<b>7,720.94</b>	<b>33,457.17</b>	<b>0.00</b>	<b>33,457.17</b>



**Pantry**

**Height: 10'**

81.67 SF Walls	5.14 SF Ceiling
86.81 SF Walls & Ceiling	5.14 SF Floor
0.57 SY Flooring	8.17 LF Floor Perimeter
8.17 LF Ceil. Perimeter	

**Missing Wall**

**1' 8" X 10'**

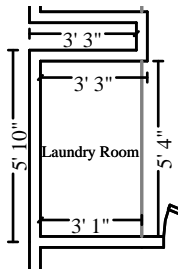
**Opens into KITCHEN**

DESCRIPTION	QUANTITY	UNIT PRICE	TAX	O&P	RCV	DEPREC.	ACV
551. Mask and prep for paint - plastic, paper, tape (per LF)	8.17 LF	1.59	0.13	3.94	17.06	(0.00)	17.06
552. 1/2" - drywall per LF - up to 2' tall	8.17 LF	13.34	0.75	32.92	142.66	(0.00)	142.66
<b>Fair market pricing for material needed</b>							
553. Clean closet organizer and rod	1.00 EA	48.90	0.08	14.70	63.68	(0.00)	63.68
554. Apply plant-based anti-microbial agent to the floor	5.14 SF	0.33	0.02	0.52	2.24	(0.00)	2.24
555. Final cleaning - construction - Residential	5.14 SF	0.34	0.00	0.52	2.27	(0.00)	2.27
556. Contents - move out then reset - Small room	1.00 EA	57.84	0.00	17.36	75.20	(0.00)	75.20

Elias Brothers GC Division  
4627 Arnold Avenue, Suite #201  
Naples, FL 34104  
Office: 239-293-2442  
elizabeth@ebgcontracting.com

**CONTINUED - Pantry**

DESCRIPTION	QUANTITY	UNIT PRICE	TAX	O&P	RCV	DEPREC.	ACV
557. Closet shelf and rod package - Detach & reset	8.17 LF	14.30	0.00	35.04	151.87	(0.00)	151.87
560. Subfloor Bracing*	5.60 SF	4.15	1.39	7.40	32.03	(0.00)	32.03
561. Detach & Reset Closet shelf and rod package	5.00 LF	14.34	0.00	21.52	93.22	(0.00)	93.22
562. R&R Bifold door - full louvered - Single	1.00 EA	270.26	10.64	84.28	365.18	(0.00)	365.18
563. Paint full lvr'd bifold door set - slab - 2 coats -per side	1.00 EA	95.65	1.20	29.06	125.91	(0.00)	125.91
564. Mask and cover light fixture	1.00 EA	16.59	0.05	5.00	21.64	(0.00)	21.64
565. Seal/prime then paint the walls (2 coats)	81.67 SF	1.13	1.13	28.02	121.44	(0.00)	121.44
569. Fir subfloor - no finish	5.14 SF	8.00	1.12	12.68	54.92	(0.00)	54.92
946. Tile floor covering - Premium grade	5.91 SF	16.65	3.98	30.72	133.10	(0.00)	133.10
947. 1/4" Cement board	5.14 SF	3.91	0.46	6.18	26.74	(0.00)	26.74
948. Tile/stone sealer	5.14 SF	0.84	0.10	1.34	5.76	(0.00)	5.76
1,022. Base shoe	8.17 LF	1.92	0.37	4.82	20.88	(0.00)	20.88
1,004. Batt insulation - 4" - R13 - paper / foil faced	20.42 SF	0.95	0.80	6.06	26.26	(0.00)	26.26
1,038. R&R Door opening (jamb & casing) - 32"to36"wide - paint grade	1.00 EA	212.55	8.08	66.20	286.83	(0.00)	286.83
1,039. Paint door/window trim & jamb - 2 coats (per side)	2.00 EA	37.84	0.72	22.92	99.32	(0.00)	99.32
<b>Totals: Pantry</b>			<b>31.02</b>	<b>431.20</b>	<b>1,868.21</b>	<b>0.00</b>	<b>1,868.21</b>



**Laundry Room**

**Height: 10'**

116.67 SF Walls	16.44 SF Ceiling
133.11 SF Walls & Ceiling	16.44 SF Floor
1.83 SY Flooring	11.67 LF Floor Perimeter
11.67 LF Ceil. Perimeter	

**Missing Wall**

**5' 4" X 10'**

**Opens into KITCHEN**

DESCRIPTION	QUANTITY	UNIT PRICE	TAX	O&P	RCV	DEPREC.	ACV
570. Mask and prep for paint - plastic, paper, tape (per LF)	11.67 LF	1.59	0.19	5.62	24.37	(0.00)	24.37
571. 1/2" - drywall per LF - up to 2' tall	11.67 LF	13.34	1.07	47.02	203.77	(0.00)	203.77

17603\_CAP\_RECON

1/27/2023

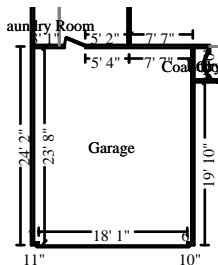
Page: 8



Elias Brothers GC Division  
4627 Arnold Avenue, Suite #201  
Naples, FL 34104  
Office: 239-293-2442  
elizabeth@ebgcontracting.com

**CONTINUED - Laundry Room**

DESCRIPTION	QUANTITY	UNIT PRICE	TAX	O&P	RCV	DEPREC.	ACV
<b>Per EBG GC Pricing</b>							
572. Paint baseboard - two coats	11.67 LF	1.69	0.12	5.96	25.80	(0.00)	25.80
574. Apply plant-based anti-microbial agent to the floor	16.44 SF	0.33	0.05	1.64	7.12	(0.00)	7.12
575. Final cleaning - construction - Residential	16.44 SF	0.34	0.00	1.68	7.27	(0.00)	7.27
576. Contents - move out then reset - Small room	1.00 EA	57.84	0.00	17.36	75.20	(0.00)	75.20
577. Mask and cover light fixture	2.00 EA	16.59	0.09	9.98	43.25	(0.00)	43.25
578. Washer/Washing machine & dryer combo - Electric	1.00 EA	1,782.46	96.00	563.54	2,442.00	(0.00)	2,442.00
579. R&R Interior door unit	1.00 EA	371.78	15.86	116.30	503.94	(0.00)	503.94
580. Seal/prime then paint the walls (2 coats)	116.67 SF	1.13	1.61	40.04	173.49	(0.00)	173.49
586. R&R Door opening (jamb & casing) - 32"to36"wide - paint grade	1.00 EA	212.55	8.08	66.20	286.83	(0.00)	286.83
<b>Price for material with Professional installation</b>							
587. Paint door slab only - 2 coats (per side)	2.00 EA	45.58	1.23	27.70	120.09	(0.00)	120.09
875. Fir subfloor - no finish	16.44 SF	8.00	3.58	40.54	175.64	(0.00)	175.64
892. Door knob - interior	1.00 EA	46.86	1.28	14.44	62.58	(0.00)	62.58
908. Closet shelf and rod package	16.83 LF	27.39	5.39	139.92	606.28	(0.00)	606.28
949. Tile floor covering - Premium grade	18.91 SF	16.65	12.74	98.28	425.87	(0.00)	425.87
950. 1/4" Cement board	16.44 SF	3.91	1.46	19.72	85.46	(0.00)	85.46
951. Tile/stone sealer	16.44 SF	0.84	0.32	4.24	18.37	(0.00)	18.37
1,005. Batt insulation - 4" - R13 - paper / foil faced	29.17 SF	0.95	1.14	8.66	37.51	(0.00)	37.51
1,023. Base shoe	11.67 LF	1.92	0.53	6.88	29.82	(0.00)	29.82
<b>Totals: Laundry Room</b>			<b>150.74</b>	<b>1,235.72</b>	<b>5,354.66</b>	<b>0.00</b>	<b>5,354.66</b>



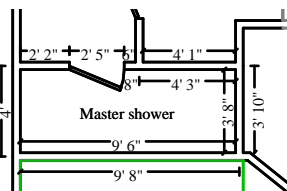
**Garage**

**Height: 13'**

1113.67 SF Walls	453.61 SF Ceiling
1567.28 SF Walls & Ceiling	453.61 SF Floor
50.40 SY Flooring	85.67 LF Floor Perimeter
85.67 LF Ceil. Perimeter	

Elias Brothers GC Division  
4627 Arnold Avenue, Suite #201  
Naples, FL 34104  
Office: 239-293-2442  
elizabeth@ebgcontracting.com

DESCRIPTION	QUANTITY	UNIT PRICE	TAX	O&P	RCV	DEPREC.	ACV
588. 1/2" - drywall per LF - up to 4' tall	85.67 LF	19.04	14.50	493.70	2,139.36	(0.00)	2,139.36
589. Seal/prime then paint the walls (2 coats)	1,113.67 SF	1.13	15.37	382.16	1,655.98	(0.00)	1,655.98
590. Mask and prep for paint - plastic, paper, tape (per LF)	85.67 LF	1.59	1.39	41.28	178.89	(0.00)	178.89
591. Overhead door & hardware - 16' x 7'	1.00 EA	1,805.27	81.97	566.18	2,453.42	(0.00)	2,453.42
592. Patio door screen, 48" wide	4.00 EA	115.76	26.37	146.84	636.25	(0.00)	636.25
593. Water heater overflow drain pan	1.00 EA	56.09	1.46	17.26	74.81	(0.00)	74.81
594. Flexible gas supply line connector - 1/2" - up to 24"	1.00 EA	34.20	1.32	10.66	46.18	(0.00)	46.18
595. Seal & paint wood beam	240.00 SF	2.29	3.74	166.00	719.34	(0.00)	719.34
596. 2" x 4" lumber (.667 BF per LF)	150.00 LF	3.39	9.36	155.36	673.22	(0.00)	673.22
597. Sheathing - OSB - 5/8"	240.00 SF	2.01	13.10	148.66	644.16	(0.00)	644.16
598. 2" x 6" lumber (1 BF per LF)	40.00 LF	3.89	3.70	47.80	207.10	(0.00)	207.10
599. 2" x 2" lumber - treated (.33 BF per LF)	130.00 LF	2.75	4.91	108.74	471.15	(0.00)	471.15
600. 4" x 4" x 8' wood post - turned	8.00 EA	115.88	35.40	288.74	1,251.18	(0.00)	1,251.18
601. Water heater - 40 gallon - Gas - 6 yr	1.00 EA	1,144.44	40.47	355.48	1,540.39	(0.00)	1,540.39
602. Seal & paint single garage door opening & trim	1.00 EA	116.88	0.56	35.22	152.66	(0.00)	152.66
603. Final cleaning - construction - Residential	453.61 SF	0.34	0.00	46.26	200.49	(0.00)	200.49
<b>Totals: Garage</b>			<b>253.62</b>	<b>3,010.34</b>	<b>13,044.58</b>	<b>0.00</b>	<b>13,044.58</b>



**Master shower**

**Height: 10'**

263.33 SF Walls	34.83 SF Ceiling
298.17 SF Walls & Ceiling	34.83 SF Floor
3.87 SY Flooring	26.33 LF Floor Perimeter
26.33 LF Ceil. Perimeter	

DESCRIPTION	QUANTITY	UNIT PRICE	TAX	O&P	RCV	DEPREC.	ACV
604. Final cleaning - construction - Residential	298.17 SF	0.34	0.00	30.42	131.80	(0.00)	131.80
605. Shower base	1.00 EA	361.65	16.58	113.48	491.71	(0.00)	491.71
606. P-trap assembly - ABS (plastic)	1.00 EA	71.63	0.48	21.62	93.73	(0.00)	93.73
607. Detach & Reset Towel bar	1.00 EA	21.44	0.00	6.44	27.88	(0.00)	27.88
608. Detach & Reset Handicap grab bar - Stainless steel, 1 1/2" x 30"	1.00 EA	42.58	0.00	12.78	55.36	(0.00)	55.36
609. Floor drain - tub/shower - metal/plastic	1.00 EA	48.55	0.62	14.74	63.91	(0.00)	63.91
610. Paint baseboard - two coats	26.33 LF	1.69	0.27	13.44	58.21	(0.00)	58.21

Elias Brothers GC Division  
 4627 Arnold Avenue, Suite #201  
 Naples, FL 34104  
 Office: 239-293-2442  
 elizabeth@ebgcontracting.com

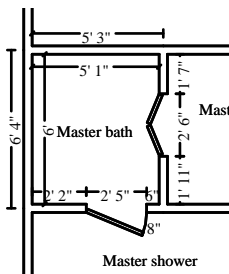
**CONTINUED - Master shower**

DESCRIPTION	QUANTITY	UNIT PRICE	TAX	O&P	RCV	DEPREC.	ACV
611. Mask and prep for paint - plastic, paper, tape (per LF)	26.33 LF	1.59	0.43	12.68	54.97	(0.00)	54.97
612. Bathroom ventilation fan w/light	1.00 EA	175.94	7.19	54.94	238.07	(0.00)	238.07
613. Baseboard - 5 1/4"	26.33 LF	5.76	4.60	46.88	203.14	(0.00)	203.14
614. Apply plant-based anti-microbial agent to the floor	34.83 SF	0.33	0.10	3.48	15.07	(0.00)	15.07
615. Subfloor Bracing*	34.83 SF	4.15	8.67	45.96	199.17	(0.00)	199.17
616. R&R Pocket door unit - Colonist	1.00 EA	396.09	10.86	122.08	529.03	(0.00)	529.03
617. Pocket door latch	1.00 EA	29.21	0.68	8.96	38.85	(0.00)	38.85
618. Toilet seat	1.00 EA	59.54	1.89	18.42	79.85	(0.00)	79.85
619. Toilet	1.00 EA	547.59	18.26	169.76	735.61	(0.00)	735.61
620. Angle stop valve	1.00 EA	38.98	0.43	11.82	51.23	(0.00)	51.23
621. Toilet paper holder	1.00 EA	28.82	0.74	8.86	38.42	(0.00)	38.42
622. Toilet flange	1.00 EA	282.77	5.52	86.50	374.79	(0.00)	374.79
623. Tile shower - 61 to 100 SF	1.00 EA	1,816.91	35.65	555.78	2,408.34	(0.00)	2,408.34
624. Detach & Reset Soap dish - Wall mounted	1.00 EA	16.97	0.00	5.10	22.07	(0.00)	22.07
625. Detach & Reset Cabinetry - upper (wall) units	2.00 LF	76.54	0.00	45.92	199.00	(0.00)	199.00
626. Clean cabinetry - upper - inside and out	2.00 LF	19.18	0.01	11.50	49.87	(0.00)	49.87
627. Clean towel bar	1.00 EA	9.17	0.00	2.76	11.93	(0.00)	11.93
628. Detach & Reset Towel ring	1.00 EA	21.95	0.00	6.58	28.53	(0.00)	28.53
629. Paint door slab only - 2 coats (per side)	1.00 EA	44.70	0.61	13.60	58.91	(0.00)	58.91
630. Paint door/window trim & jamb - 2 coats (per side)	1.00 EA	37.06	0.36	11.22	48.64	(0.00)	48.64
631. 5/8" - drywall per LF - up to 2' tall	26.33 LF	13.68	2.51	108.82	471.52	(0.00)	471.52
<b>Per EBG GC Pricing</b>							
632. 1/2" - drywall per LF - up to 2' tall	26.33 LF	13.34	2.42	106.10	459.76	(0.00)	459.76
633. Seal/prime then paint the walls (2 coats)	263.33 SF	1.13	3.63	90.34	391.53	(0.00)	391.53
636. R&R Door opening (jamb & casing) - 32"to36"wide - stain grade	1.00 EA	256.58	10.72	80.20	347.50	(0.00)	347.50
876. Fir subfloor - no finish	34.83 SF	8.00	7.59	85.88	372.11	(0.00)	372.11
889. Grout sealer	34.83 SF	1.14	0.33	12.02	52.06	(0.00)	52.06
906. Clean bathroom fan	1.00 EA	36.47	0.00	10.94	47.41	(0.00)	47.41
955. Tile floor covering - Premium grade	40.06 SF	16.65	26.99	208.20	902.19	(0.00)	902.19
956. 1/4" Cement board	34.83 SF	3.91	3.09	41.78	181.06	(0.00)	181.06
957. Tile/stone sealer	34.83 SF	0.84	0.67	8.98	38.91	(0.00)	38.91

Elias Brothers GC Division  
4627 Arnold Avenue, Suite #201  
Naples, FL 34104  
Office: 239-293-2442  
elizabeth@ebgcontracting.com

**CONTINUED - Master shower**

DESCRIPTION	QUANTITY	UNIT PRICE	TAX	O&P	RCV	DEPREC.	ACV
973. Tile base	26.33 LF	14.71	6.41	118.12	511.84	(0.00)	511.84
1,006. Batt insulation - 4" - R13 - paper / foil faced	65.83 SF	0.95	2.57	19.54	84.65	(0.00)	84.65
1,024. Base shoe	26.33 LF	1.92	1.20	15.52	67.27	(0.00)	67.27
<b>Totals: Master shower</b>			<b>182.08</b>	<b>2,362.16</b>	<b>10,235.90</b>	<b>0.00</b>	<b>10,235.90</b>



**Master bath**

**Height: 10'**

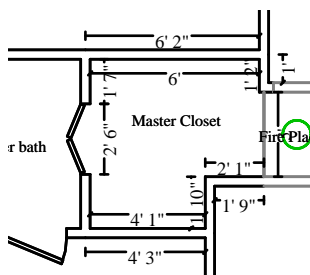
221.67 SF Walls	30.50 SF Ceiling
252.17 SF Walls & Ceiling	30.50 SF Floor
3.39 SY Flooring	22.17 LF Floor Perimeter
22.17 LF Ceil. Perimeter	

DESCRIPTION	QUANTITY	UNIT PRICE	TAX	O&P	RCV	DEPREC.	ACV
639. Final cleaning - construction - Residential	252.17 SF	0.34	0.00	25.72	111.46	(0.00)	111.46
641. Clean outlet or switch	4.00 EA	4.52	0.00	5.42	23.50	(0.00)	23.50
642. Vanity - Premium grade	10.00 LF	478.04	255.16	1,510.66	6,546.22	(0.00)	6,546.22
643. Sink faucet - Bathroom	2.00 EA	233.54	17.08	145.24	629.40	(0.00)	629.40
644. Sink - double basin	1.00 EA	413.16	16.61	128.92	558.69	(0.00)	558.69
645. Mirror - 1/8" plate glass	15.00 SF	15.25	8.17	71.08	308.00	(0.00)	308.00
646. Detach & Reset Medicine cabinet	1.00 EA	67.10	0.00	20.14	87.24	(0.00)	87.24
647. Mask and prep for paint - plastic, paper, tape (per LF)	22.17 LF	1.59	0.36	10.68	46.29	(0.00)	46.29
648. 1/2" - drywall per LF - up to 2' tall	22.17 LF	13.34	2.04	89.34	387.13	(0.00)	387.13
649. R&R Interior door unit - Standard grade	1.00 EA	353.15	14.74	110.38	478.27	(0.00)	478.27
650. Apply plant-based anti-microbial agent to the floor	30.50 SF	0.33	0.09	3.04	13.20	(0.00)	13.20
651. P-trap assembly - ABS (plastic)	1.00 EA	71.63	0.48	21.62	93.73	(0.00)	93.73
652. Seal & paint vanity - inside and out	10.00 LF	43.94	3.38	132.84	575.62	(0.00)	575.62
653. Door knob - interior	1.00 EA	46.10	1.28	14.22	61.60	(0.00)	61.60
654. Subfloor Bracing*	30.50 SF	4.15	7.59	40.26	174.43	(0.00)	174.43
655. Seal/prime then paint the walls (2 coats)	221.67 SF	1.13	3.06	76.06	329.61	(0.00)	329.61

Elias Brothers GC Division  
4627 Arnold Avenue, Suite #201  
Naples, FL 34104  
Office: 239-293-2442  
elizabeth@ebgcontracting.com

**CONTINUED - Master bath**

DESCRIPTION	QUANTITY	UNIT PRICE	TAX	O&P	RCV	DEPREC.	ACV
659. R&R Door opening (jamb & casing) - 32"to36"wide - stain grade	1.00 EA	256.58	10.72	80.20	347.50	(0.00)	347.50
662. Paint door/window trim & jamb - 2 coats (per side)	2.00 EA	37.84	0.72	22.92	99.32	(0.00)	99.32
877. Fir subfloor - no finish	30.50 SF	8.00	6.64	75.20	325.84	(0.00)	325.84
900. Carpet - metal transition strip	22.17 LF	3.09	1.77	21.10	91.38	(0.00)	91.38
959. 1/4" Cement board	30.50 SF	3.91	2.71	36.60	158.57	(0.00)	158.57
960. Tile/stone sealer	30.50 SF	0.84	0.59	7.86	34.07	(0.00)	34.07
974. Tile floor covering - Premium grade	35.08 SF	16.65	23.64	182.32	790.04	(0.00)	790.04
975. Ceramic tile base	22.17 LF	17.33	8.89	117.92	511.02	(0.00)	511.02
977. Paint vanity - inside and out	10.00 LF	33.90	2.68	102.50	444.18	(0.00)	444.18
979. Clean light bar - Large - Heavy	1.00 EA	36.49	0.01	10.94	47.44	(0.00)	47.44
1,007. Batt insulation - 4" - R13 - paper / foil faced	55.42 SF	0.95	2.16	16.44	71.25	(0.00)	71.25
1,025. Base shoe	22.17 LF	1.92	1.01	13.08	56.66	(0.00)	56.66
1,040. Paint door slab only - 2 coats (per side)	2.00 EA	45.58	1.23	27.70	120.09	(0.00)	120.09
<b>Totals: Master bath</b>			<b>392.81</b>	<b>3,120.40</b>	<b>13,521.75</b>	<b>0.00</b>	<b>13,521.75</b>



**Master Closet**

**Height: 10'**

235.67 SF Walls	32.99 SF Ceiling
268.65 SF Walls & Ceiling	32.99 SF Floor
3.67 SY Flooring	21.17 LF Floor Perimeter
24.17 LF Ceil. Perimeter	

**Missing Wall**

**3' X 10'**

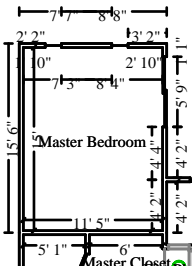
**Opens into FIRE\_PLACE**

DESCRIPTION	QUANTITY	UNIT PRICE	TAX	O&P	RCV	DEPREC.	ACV
663. Final cleaning - construction - Residential	268.65 SF	0.34	0.00	27.40	118.74	(0.00)	118.74
665. Clean cold air return cover	1.00 EA	11.32	0.00	3.40	14.72	(0.00)	14.72
666. Clean light fixture	1.00 EA	13.78	0.00	4.14	17.92	(0.00)	17.92
667. Clean closet organizer and rod	1.00 EA	48.90	0.08	14.70	63.68	(0.00)	63.68
668. Mask and prep for paint - plastic, paper, tape (per LF)	24.17 LF	1.59	0.39	11.64	50.46	(0.00)	50.46
669. 1/2" - drywall per LF - up to 2' tall	21.17 LF	13.34	1.94	85.30	369.65	(0.00)	369.65

Elias Brothers GC Division  
4627 Arnold Avenue, Suite #201  
Naples, FL 34104  
Office: 239-293-2442  
elizabeth@ebgcontracting.com

**CONTINUED - Master Closet**

DESCRIPTION	QUANTITY	UNIT PRICE	TAX	O&P	RCV	DEPREC.	ACV
670. Baseboard - 5 1/4"	21.17 LF	5.76	3.70	37.70	163.34	(0.00)	163.34
671. Paint baseboard - two coats	21.17 LF	1.69	0.22	10.80	46.80	(0.00)	46.80
672. Tear out subfloor & bag for disposal - Category 3	32.99 SF	3.08	0.18	30.54	132.33	(0.00)	132.33
673. Apply plant-based anti-microbial agent to the floor	32.99 SF	0.33	0.10	3.30	14.29	(0.00)	14.29
674. Subfloor Bracing*	32.99 SF	4.15	8.21	43.54	188.66	(0.00)	188.66
675. R&R Bifold mirrored door set - Double	1.00 EA	608.83	25.75	190.36	824.94	(0.00)	824.94
676. Seal/prime then paint the walls (2 coats)	235.67 SF	1.13	3.25	80.88	350.44	(0.00)	350.44
678. Carpet pad	32.99 SF	0.67	1.01	6.94	30.05	(0.00)	30.05
679. Carpet - Requested*	37.93 SF	7.74	15.29	92.66	401.53	(0.00)	401.53
681. R&R Door opening (jamb & casing) - 32"to36"wide - stain grade	1.00 EA	256.58	10.72	80.20	347.50	(0.00)	347.50
683. Paint door/window trim & jamb - 2 coats (per side)	2.00 EA	37.84	0.72	22.92	99.32	(0.00)	99.32
878. Fir subfloor - no finish	32.99 SF	8.00	7.19	81.34	352.45	(0.00)	352.45
901. Carpet - metal transition strip	21.17 LF	3.09	1.69	20.12	87.23	(0.00)	87.23
1,008. Batt insulation - 4" - R13 - paper / foil faced	58.92 SF	0.95	2.30	17.50	75.77	(0.00)	75.77
1,026. Base shoe	21.17 LF	1.92	0.97	12.50	54.12	(0.00)	54.12
<b>Totals: Master Closet</b>			<b>83.71</b>	<b>877.88</b>	<b>3,803.94</b>	<b>0.00</b>	<b>3,803.94</b>



**Master Bedroom**

**Height: 10'**


528.33 SF Walls	171.25 SF Ceiling
699.58 SF Walls & Ceiling	171.25 SF Floor
19.03 SY Flooring	52.83 LF Floor Perimeter
52.83 LF Ceil. Perimeter	

DESCRIPTION	QUANTITY	UNIT PRICE	TAX	O&P	RCV	DEPREC.	ACV
684. Mask and prep for paint - plastic, paper, tape (per LF)	52.83 LF	1.59	0.86	25.46	110.32	(0.00)	110.32
685. 1/2" - drywall per LF - up to 2' tall	52.83 LF	13.34	4.85	212.88	922.48	(0.00)	922.48

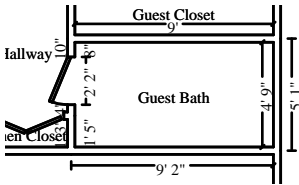
**Fair market pricing for material needed**

Elias Brothers GC Division  
 4627 Arnold Avenue, Suite #201  
 Naples, FL 34104  
 Office: 239-293-2442  
 elizabeth@ebgcontracting.com

**CONTINUED - Master Bedroom**

DESCRIPTION	QUANTITY	UNIT PRICE	TAX	O&P	RCV	DEPREC.	ACV
686. Baseboard - 5 1/4"	52.83 LF	5.76	9.22	94.06	407.58	(0.00)	407.58
687. Paint baseboard - two coats	52.83 LF	1.69	0.54	26.94	116.76	(0.00)	116.76
688. Clean ceiling fan and light - Heavy	1.00 EA	48.34	0.00	14.50	62.84	(0.00)	62.84
689. Outlet	5.00 EA	21.39	0.51	32.24	139.70	(0.00)	139.70
690. Apply plant-based anti-microbial agent to the floor	171.25 SF	0.33	0.51	17.12	74.14	(0.00)	74.14
691. Final cleaning - construction - Residential	171.25 SF	0.34	0.00	17.46	75.69	(0.00)	75.69
692. Contents - move out then reset - Large room	1.00 EA	115.57	0.00	34.68	150.25	(0.00)	150.25
693. R&R Interior door unit	1.00 EA	371.78	15.86	116.30	503.94	(0.00)	503.94
695. Paint door/window trim & jamb - 2 coats (per side)	2.00 EA	37.06	0.72	22.46	97.30	(0.00)	97.30
696. Subfloor Bracing*	212.00 SF	4.15	52.79	279.78	1,212.37	(0.00)	1,212.37
697. Door knob - interior	1.00 EA	46.10	1.28	14.22	61.60	(0.00)	61.60
698. Clean acoustic ceiling (popcorn) texture	171.25 SF	0.68	0.10	34.98	151.53	(0.00)	151.53
699. Drywall patch / small repair, ready for paint	2.00 EA	119.26	0.42	71.68	310.62	(0.00)	310.62
700. Mask and cover light fixture	2.00 EA	16.59	0.09	9.98	43.25	(0.00)	43.25
701. Seal/prime then paint the walls (2 coats)	528.33 SF	1.13	7.29	181.28	785.58	(0.00)	785.58
703. Carpet - Premium grade	196.94 SF	7.74	79.41	481.12	2,084.85	(0.00)	2,084.85
704. Carpet pad	171.25 SF	0.67	5.24	36.00	155.98	(0.00)	155.98
705. R&R 6-0 6-8 vinyl sliding patio door - High grade	2.00 EA	2,058.21	146.48	1,278.86	5,541.76	(0.00)	5,541.76
 706. R&R Door opening (jamb & casing) - 32"to36"wide - stain grade	2.00 EA	256.58	21.44	160.38	694.98	(0.00)	694.98
879. Fir subfloor - no finish	171.25 SF	8.00	37.30	422.20	1,829.50	(0.00)	1,829.50
891. Door lockset & deadbolt - exterior	1.00 EA	91.49	3.45	28.48	123.42	(0.00)	123.42
896. Clean ceiling fan and light	1.00 EA	33.71	0.00	10.12	43.83	(0.00)	43.83
898. Paint door slab only - 2 coats (per side)	2.00 EA	45.58	1.23	27.70	120.09	(0.00)	120.09
1,009. Batt insulation - 4" - R13 - paper / foil faced	132.08 SF	0.95	5.15	39.18	169.81	(0.00)	169.81
1,027. Base shoe	52.83 LF	1.92	2.41	31.14	134.98	(0.00)	134.98
<b>Totals: Master Bedroom</b>			<b>397.15</b>	<b>3,721.20</b>	<b>16,125.15</b>	<b>0.00</b>	<b>16,125.15</b>

Elias Brothers GC Division  
4627 Arnold Avenue, Suite #201  
Naples, FL 34104  
Office: 239-293-2442  
elizabeth@ebgcontracting.com



**Guest Bath**

**Height: 10'**

275.00 SF Walls  
317.75 SF Walls & Ceiling  
4.75 SY Flooring  
27.50 LF Ceil. Perimeter

42.75 SF Ceiling  
42.75 SF Floor  
27.50 LF Floor Perimeter

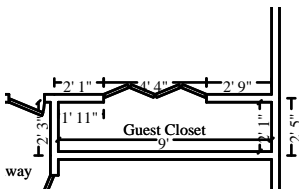
DESCRIPTION	QUANTITY	UNIT PRICE	TAX	O&P	RCV	DEPREC.	ACV
728. Toilet seat	1.00 EA	59.54	1.89	18.42	79.85	(0.00)	79.85
729. Toilet paper holder	1.00 EA	28.82	0.74	8.86	38.42	(0.00)	38.42
730. Detach & Reset Towel bar	2.00 EA	20.80	0.00	12.48	54.08	(0.00)	54.08
731. Outlet	5.00 EA	21.39	0.51	32.24	139.70	(0.00)	139.70
732. Light fixture - Detach & reset	1.00 EA	75.68	0.00	22.70	98.38	(0.00)	98.38
733. Seal & paint vanity - inside and out	5.00 LF	43.94	1.69	66.42	287.81	(0.00)	287.81
734. Vanity	4.00 LF	244.49	46.01	307.18	1,331.15	(0.00)	1,331.15
735. Bathtub	1.00 EA	964.91	26.45	297.42	1,288.78	(0.00)	1,288.78
736. Door knob - interior	1.00 EA	46.10	1.28	14.22	61.60	(0.00)	61.60
737. Contents - move out then reset - Small room	1.00 EA	57.84	0.00	17.36	75.20	(0.00)	75.20
738. P-trap assembly - ABS (plastic)	1.00 EA	71.63	0.48	21.62	93.73	(0.00)	93.73
739. Final cleaning - construction - Residential	42.75 SF	0.34	0.00	4.36	18.90	(0.00)	18.90
740. Apply plant-based anti-microbial agent to the floor	42.75 SF	0.33	0.13	4.28	18.52	(0.00)	18.52
741. Clean light bar	2.00 EA	23.96	0.01	14.38	62.31	(0.00)	62.31
742. Clean mirror - Heavy	18.00 SF	1.28	0.01	6.92	29.97	(0.00)	29.97
743. Paint door slab only - 2 coats (per side)	2.00 EA	44.70	1.23	27.18	117.81	(0.00)	117.81
744. R&R Interior door unit - Standard grade	1.00 EA	353.15	14.74	110.38	478.27	(0.00)	478.27
746. Paint baseboard - two coats	27.50 LF	1.69	0.28	14.02	60.78	(0.00)	60.78
747. Sink - single	1.00 EA	290.98	9.83	90.24	391.05	(0.00)	391.05
748. Baseboard - 5 1/4"	27.50 LF	5.76	4.80	48.96	212.16	(0.00)	212.16
749. Clean cold air return cover	1.00 EA	11.32	0.00	3.40	14.72	(0.00)	14.72
750. 1/2" - drywall per LF - up to 2' tall	27.50 LF	13.34	2.52	110.82	480.19	(0.00)	480.19
751. Toilet	1.00 EA	547.59	18.26	169.76	735.61	(0.00)	735.61
752. Mask and prep for paint - plastic, paper, tape (per LF)	27.50 LF	1.59	0.45	13.26	57.44	(0.00)	57.44
753. Subfloor Bracing*	42.75 SF	4.15	10.64	56.42	244.47	(0.00)	244.47
754. Clean window unit (per side) 3 - 9 SF	1.00 EA	13.73	0.00	4.12	17.85	(0.00)	17.85
755. Clean sill - tile	3.00 LF	1.24	0.00	1.12	4.84	(0.00)	4.84
756. Detach & Reset Light fixture	1.00 EA	75.68	0.00	22.70	98.38	(0.00)	98.38
757. Detach & Reset Mirror - 1/8" plate glass	18.00 SF	7.59	0.00	40.98	177.60	(0.00)	177.60
758. Toilet flange	1.00 EA	282.77	5.52	86.50	374.79	(0.00)	374.79



Elias Brothers GC Division  
4627 Arnold Avenue, Suite #201  
Naples, FL 34104  
Office: 239-293-2442  
elizabeth@ebgcontracting.com

**CONTINUED - Guest Bath**

DESCRIPTION	QUANTITY	UNIT PRICE	TAX	O&P	RCV	DEPREC.	ACV
759. Angle stop valve	1.00 EA	38.98	0.43	11.82	51.23	(0.00)	51.23
760. Clean bathroom fan	1.00 EA	36.63	0.00	10.98	47.61	(0.00)	47.61
761. Clean light fixture	1.00 EA	13.78	0.00	4.14	17.92	(0.00)	17.92
762. 5/8" blueboard - hung only (no tape or finish)	30.00 SF	1.97	0.94	18.02	78.06	(0.00)	78.06
763. Seal/prime then paint the walls (2 coats)	275.00 SF	1.13	3.80	94.36	408.91	(0.00)	408.91
765. Ceramic tile base	49.16 LF	18.74	19.70	282.30	1,223.26	(0.00)	1,223.26
768. R&R Door opening (jamb & casing) - 32"to36"wide - paint grade	1.00 EA	212.55	8.08	66.20	286.83	(0.00)	286.83
880. Fir subfloor - no finish	42.75 SF	8.00	9.31	105.40	456.71	(0.00)	456.71
961. Tile floor covering - Premium grade	49.16 SF	16.65	33.12	255.50	1,107.13	(0.00)	1,107.13
962. 1/4" Cement board	42.75 SF	3.91	3.80	51.28	222.23	(0.00)	222.23
963. Tile/stone sealer	42.75 SF	0.84	0.82	11.02	47.75	(0.00)	47.75
976. Paint vanity - inside and out	4.00 LF	33.90	1.07	41.00	177.67	(0.00)	177.67
1,010. Batt insulation - 4" - R13 - paper / foil faced	68.75 SF	0.95	2.68	20.40	88.39	(0.00)	88.39
1,028. Base shoe	27.50 LF	1.92	1.25	16.22	70.27	(0.00)	70.27
1,042. Paint door/window trim & jamb - 2 coats (per side)	2.00 EA	37.84	0.72	22.92	99.32	(0.00)	99.32
<b>Totals: Guest Bath</b>			<b>233.19</b>	<b>2,660.28</b>	<b>11,527.65</b>	<b>0.00</b>	<b>11,527.65</b>



**Guest Closet**

**Height: 10'**

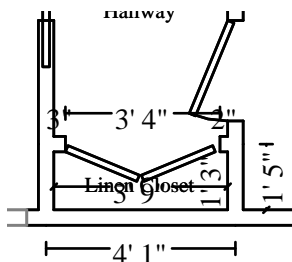
- 221.67 SF Walls
- 240.42 SF Walls & Ceiling
- 2.08 SY Flooring
- 22.17 LF Ceil. Perimeter
- 18.75 SF Ceiling
- 18.75 SF Floor
- 22.17 LF Floor Perimeter

DESCRIPTION	QUANTITY	UNIT PRICE	TAX	O&P	RCV	DEPREC.	ACV
769. Mask and prep for paint - plastic, paper, tape (per LF)	22.17 LF	1.59	0.36	10.68	46.29	(0.00)	46.29
770. 1/2" - drywall per LF - up to 2' tall	22.17 LF	13.34	2.04	89.34	387.13	(0.00)	387.13
771. Baseboard - 5 1/4"	22.17 LF	5.76	3.87	39.48	171.05	(0.00)	171.05
772. Paint baseboard - two coats	22.17 LF	1.69	0.23	11.30	49.00	(0.00)	49.00

Elias Brothers GC Division  
4627 Arnold Avenue, Suite #201  
Naples, FL 34104  
Office: 239-293-2442  
elizabeth@ebgcontracting.com

**CONTINUED - Guest Closet**

DESCRIPTION	QUANTITY	UNIT PRICE	TAX	O&P	RCV	DEPREC.	ACV
773. Apply plant-based anti-microbial agent to the floor	18.75 SF	0.33	0.06	1.88	8.13	(0.00)	8.13
774. Final cleaning - construction - Residential	18.75 SF	0.34	0.00	1.92	8.30	(0.00)	8.30
775. Closet shelf and rod package - Detach & reset	22.17 LF	14.30	0.00	95.10	412.13	(0.00)	412.13
776. Subfloor Bracing*	14.90 SF	4.15	3.71	19.68	85.23	(0.00)	85.23
777. R&R Bifold door set - full louvered - Double	1.00 EA	525.01	21.29	163.88	710.18	(0.00)	710.18
778. Paint full lvr'd bifold door set - slab - 2 coats -per side	2.00 EA	95.65	2.41	58.12	251.83	(0.00)	251.83
779. Mask and cover light fixture	1.00 EA	16.59	0.05	5.00	21.64	(0.00)	21.64
780. Seal/prime then paint the walls (2 coats)	221.67 SF	1.13	3.06	76.06	329.61	(0.00)	329.61
782. Carpet pad	18.75 SF	0.67	0.57	3.94	17.07	(0.00)	17.07
783. R&R Door opening (jamb & casing) - 32"to36"wide - stain grade	1.00 EA	256.58	10.72	80.20	347.50	(0.00)	347.50
786. Carpet - Premium grade	21.56 SF	7.74	8.69	52.66	228.22	(0.00)	228.22
881. Fir subfloor - no finish	18.75 SF	8.00	4.08	46.22	200.30	(0.00)	200.30
1,011. Batt insulation - 4" - R13 - paper / foil faced	55.42 SF	0.95	2.16	16.44	71.25	(0.00)	71.25
1,029. Base shoe	22.17 LF	1.92	1.01	13.08	56.66	(0.00)	56.66
1,043. Paint door/window trim & jamb - 2 coats (per side)	2.00 EA	37.84	0.72	22.92	99.32	(0.00)	99.32
<b>Totals: Guest Closet</b>			<b>65.03</b>	<b>807.90</b>	<b>3,500.84</b>	<b>0.00</b>	<b>3,500.84</b>



**Linen Closet**

**Height: 10'**

100.00 SF Walls	4.69 SF Ceiling
104.69 SF Walls & Ceiling	4.69 SF Floor
0.52 SY Flooring	10.00 LF Floor Perimeter
10.00 LF Ceil. Perimeter	

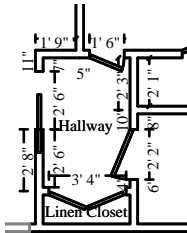
DESCRIPTION	QUANTITY	UNIT PRICE	TAX	O&P	RCV	DEPREC.	ACV
787. Mask and prep for paint - plastic, paper, tape (per LF)	10.00 LF	1.59	0.16	4.82	20.88	(0.00)	20.88
788. 1/2" - drywall per LF - up to 2' tall	10.00 LF	13.34	0.92	40.30	174.62	(0.00)	174.62

Elias Brothers GC Division  
 4627 Arnold Avenue, Suite #201  
 Naples, FL 34104  
 Office: 239-293-2442  
 elizabeth@ebgcontracting.com

**CONTINUED - Linen Closet**

DESCRIPTION	QUANTITY	UNIT PRICE	TAX	O&P	RCV	DEPREC.	ACV
<b>Fair market pricing for material needed</b>							
789. Clean closet organizer and rod	1.00 EA	48.90	0.08	14.70	63.68	(0.00)	63.68
790. Apply plant-based anti-microbial agent to the floor	4.69 SF	0.33	0.01	0.46	2.02	(0.00)	2.02
791. Final cleaning - construction - Residential	4.69 SF	0.34	0.00	0.48	2.07	(0.00)	2.07
792. Contents - move out then reset - Small room	1.00 EA	57.84	0.00	17.36	75.20	(0.00)	75.20
793. Closet shelf and rod package - Detach & reset	10.00 LF	14.30	0.00	42.90	185.90	(0.00)	185.90
795. Bifold door set - Colonist - Double	1.00 EA	347.28	12.02	107.78	467.08	(0.00)	467.08
<b>Fair Market Pricing for Material and Labor needed</b>							
796. Subfloor Bracing*	5.60 SF	4.15	1.39	7.40	32.03	(0.00)	32.03
797. Detach & Reset Closet shelf and rod package	5.00 LF	14.34	0.00	21.52	93.22	(0.00)	93.22
798. R&R Bifold door - full louvered - Single	1.00 EA	270.26	10.64	84.28	365.18	(0.00)	365.18
799. Paint full lvr'd bifold door set - slab - 2 coats -per side	2.00 EA	95.65	2.41	58.12	251.83	(0.00)	251.83
800. Mask and cover light fixture	1.00 EA	16.59	0.05	5.00	21.64	(0.00)	21.64
801. Seal/prime then paint the walls (2 coats)	100.00 SF	1.13	1.38	34.32	148.70	(0.00)	148.70
882. Fir subfloor - no finish	4.69 SF	8.00	1.02	11.56	50.10	(0.00)	50.10
964. Tile floor covering - Premium grade	5.39 SF	16.65	3.63	28.00	121.37	(0.00)	121.37
965. 1/4" Cement board	4.69 SF	3.91	0.42	5.62	24.38	(0.00)	24.38
966. Tile/stone sealer	4.69 SF	0.84	0.09	1.20	5.23	(0.00)	5.23
1,012. Batt insulation - 4" - R13 - paper / foil faced	25.00 SF	0.95	0.98	7.42	32.15	(0.00)	32.15
1,030. Base shoe	10.00 LF	1.92	0.46	5.90	25.56	(0.00)	25.56
1,044. R&R Door opening (jamb & casing) - 32"to36"wide - paint grade	1.00 EA	212.55	8.08	66.20	286.83	(0.00)	286.83
1,045. Paint door/window trim & jamb - 2 coats (per side)	2.00 EA	37.84	0.72	22.92	99.32	(0.00)	99.32
<b>Totals: Linen Closet</b>			<b>44.46</b>	<b>588.26</b>	<b>2,548.99</b>	<b>0.00</b>	<b>2,548.99</b>

Elias Brothers GC Division  
4627 Arnold Avenue, Suite #201  
Naples, FL 34104  
Office: 239-293-2442  
elizabeth@ebgcontracting.com



**Hallway**

**Height: 10'**

186.67 SF Walls	20.94 SF Ceiling
207.60 SF Walls & Ceiling	20.94 SF Floor
2.33 SY Flooring	18.67 LF Floor Perimeter
18.67 LF Ceil. Perimeter	

DESCRIPTION	QUANTITY	UNIT PRICE	TAX	O&P	RCV	DEPREC.	ACV
806. Mask and prep for paint - plastic, paper, tape (per LF)	18.67 LF	1.59	0.30	9.00	38.99	(0.00)	38.99
807. 1/2" - drywall per LF - up to 2' tall	18.67 LF	13.34	1.71	75.24	326.01	(0.00)	326.01
<b>Per EBG GC Pricing</b>							
808. Baseboard - 5 1/4"	18.67 LF	5.76	3.26	33.24	144.04	(0.00)	144.04
809. Paint baseboard - two coats	18.67 LF	1.69	0.19	9.52	41.26	(0.00)	41.26
811. Apply plant-based anti-microbial agent to the floor	20.94 SF	0.33	0.06	2.10	9.07	(0.00)	9.07
812. Final cleaning - construction - Residential	20.94 SF	0.34	0.00	2.14	9.26	(0.00)	9.26
813. Subfloor Bracing*	19.53 SF	4.15	4.86	25.78	111.69	(0.00)	111.69
814. Drywall patch / small repair, ready for paint	2.00 EA	119.26	0.42	71.68	310.62	(0.00)	310.62
815. Mask and cover light fixture	1.00 EA	16.59	0.05	5.00	21.64	(0.00)	21.64
816. Seal/prime then paint the walls (2 coats)	186.67 SF	1.13	2.58	64.06	277.58	(0.00)	277.58
883. Fir subfloor - no finish	20.94 SF	8.00	4.56	51.62	223.70	(0.00)	223.70
967. Tile floor covering - Premium grade	24.08 SF	16.65	16.23	125.14	542.30	(0.00)	542.30
968. 1/4" Cement board	20.94 SF	3.91	1.86	25.12	108.86	(0.00)	108.86
969. Tile/stone sealer	20.94 SF	0.84	0.40	5.40	23.39	(0.00)	23.39
1,013. Batt insulation - 4" - R13 - paper / foil faced	46.67 SF	0.95	1.82	13.84	60.00	(0.00)	60.00
1,031. Base shoe	18.67 LF	1.92	0.85	11.02	47.72	(0.00)	47.72
<b>Totals: Hallway</b>			<b>39.15</b>	<b>529.90</b>	<b>2,296.13</b>	<b>0.00</b>	<b>2,296.13</b>



**Guest Room**

**Height: 10'**

465.00 SF Walls	135.06 SF Ceiling
600.06 SF Walls & Ceiling	135.06 SF Floor
15.01 SY Flooring	46.50 LF Floor Perimeter
46.50 LF Ceil. Perimeter	

DESCRIPTION	QUANTITY	UNIT PRICE	TAX	O&P	RCV	DEPREC.	ACV
-------------	----------	------------	-----	-----	-----	---------	-----



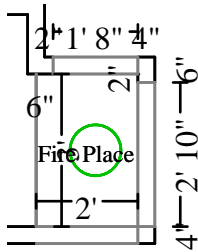
# Elias Brothers General Contractor, Inc

Elias Brothers GC Division  
 4627 Arnold Avenue, Suite #201  
 Naples, FL 34104  
 Office: 239-293-2442  
 elizabeth@ebgcontracting.com

## CONTINUED - Guest Room

DESCRIPTION	QUANTITY	UNIT PRICE	TAX	O&P	RCV	DEPREC.	ACV
821. Mask and prep for paint - plastic, paper, tape (per LF)	46.50 LF	1.59	0.75	22.40	97.09	(0.00)	97.09
822. 1/2" - drywall per LF - up to 2' tall	46.50 LF	13.34	4.27	187.38	811.96	(0.00)	811.96
823. Baseboard - 5 1/4"	46.50 LF	5.76	8.12	82.80	358.76	(0.00)	358.76
824. Paint baseboard - two coats	46.50 LF	1.69	0.47	23.72	102.78	(0.00)	102.78
825. Clean ceiling fan and light - Heavy	1.00 EA	48.34	0.00	14.50	62.84	(0.00)	62.84
826. Apply plant-based anti-microbial agent to the floor	135.06 SF	0.33	0.41	13.50	58.48	(0.00)	58.48
827. Final cleaning - construction - Residential	135.06 SF	0.34	0.00	13.78	59.70	(0.00)	59.70
828. Contents - move out then reset - Large room	1.00 EA	115.57	0.00	34.68	150.25	(0.00)	150.25
829. Subfloor Bracing*	144.33 SF	4.15	35.94	190.48	825.39	(0.00)	825.39
830. Door knob - interior	1.00 EA	46.10	1.28	14.22	61.60	(0.00)	61.60
831. Clean sill - tile	4.00 LF	1.24	0.00	1.48	6.44	(0.00)	6.44
832. Mask and cover light fixture	2.00 EA	16.59	0.09	9.98	43.25	(0.00)	43.25
833. Seal/prime then paint the walls (2 coats)	465.00 SF	1.13	6.42	159.56	691.43	(0.00)	691.43
835. Carpet pad	135.06 SF	0.67	4.13	28.38	123.00	(0.00)	123.00
837. R&R Interior door unit	1.00 EA	371.78	15.86	116.30	503.94	(0.00)	503.94
840. R&R Door opening (jamb & casing) - 32"to36"wide - paint grade	1.00 EA	212.55	8.08	66.20	286.83	(0.00)	286.83
841. Paint door slab only - 2 coats (per side)	2.00 EA	45.58	1.23	27.70	120.09	(0.00)	120.09
842. Carpet - Premium grade	155.31 SF	7.74	62.62	379.42	1,644.14	(0.00)	1,644.14
884. Fir subfloor - no finish	135.06 SF	8.00	29.42	332.96	1,442.86	(0.00)	1,442.86
897. Clean ceiling fan and light	1.00 EA	33.71	0.00	10.12	43.83	(0.00)	43.83
1,014. Batt insulation - 4" - R13 - paper / foil faced	116.25 SF	0.95	4.53	34.50	149.47	(0.00)	149.47
1,032. Base shoe	46.50 LF	1.92	2.12	27.42	118.82	(0.00)	118.82
1,046. Paint door/window trim & jamb - 2 coats (per side)	2.00 EA	37.84	0.72	22.92	99.32	(0.00)	99.32
<b>Totals: Guest Room</b>			<b>186.46</b>	<b>1,814.40</b>	<b>7,862.27</b>	<b>0.00</b>	<b>7,862.27</b>

Elias Brothers GC Division  
4627 Arnold Avenue, Suite #201  
Naples, FL 34104  
Office: 239-293-2442  
elizabeth@ebgcontracting.com



**Fire Place**

**Height: 2'**

14.33 SF Walls	6.00 SF Ceiling
20.33 SF Walls & Ceiling	6.00 SF Floor
0.67 SY Flooring	7.17 LF Floor Perimeter
7.17 LF Ceil. Perimeter	

- Missing Wall - Goes to Ceiling **2' 10" X 0"** **Opens into LIVING\_ROOM**
- Missing Wall - Goes to Ceiling **1' 8" X 0"** **Opens into LIVING\_ROOM**
- Missing Wall **3' X 2'** **Opens into MASTER\_CLOSE**
- Missing Wall - Goes to Ceiling **2' X 0"** **Opens into LIVING\_ROOM**

DESCRIPTION	QUANTITY	UNIT PRICE	TAX	O&P	RCV	DEPREC.	ACV
399. Fireplace grate	1.00 EA	58.14	3.00	18.34	79.48	(0.00)	79.48
400. Fireplace, zero clnce, direct vent, w/ venting	1.00 EA	2,441.33	105.73	764.12	3,311.18	(0.00)	3,311.18
452. Fireplace hearth - brick	1.00 SF	45.00	0.53	13.66	59.19	(0.00)	59.19
453. Fireplace screen	1.00 EA	186.28	9.14	58.62	254.04	(0.00)	254.04
455. Glass fireplace door	1.00 EA	401.94	22.08	127.20	551.22	(0.00)	551.22
456. Fireplace damper	1.00 EA	253.75	10.19	79.18	343.12	(0.00)	343.12
885. Fir subfloor - no finish	6.00 SF	8.00	1.31	14.80	64.11	(0.00)	64.11
1,033. Base shoe	7.17 LF	1.92	0.33	4.24	18.34	(0.00)	18.34

**Totals: Fire Place** **152.31** **1,080.16** **4,680.68** **0.00** **4,680.68**



**Living Room**

**Height: 10'**

628.55 SF Walls	233.36 SF Ceiling
861.91 SF Walls & Ceiling	233.36 SF Floor
25.93 SY Flooring	64.15 LF Floor Perimeter
64.15 LF Ceil. Perimeter	

- Missing Wall - Goes to Ceiling **2' 10" X 8'** **Opens into FIRE\_PLACE**
- Missing Wall - Goes to Ceiling **1' 8" X 8'** **Opens into FIRE\_PLACE**
- Missing Wall **5' 8" X 10'** **Opens into DINING\_ROOM2**
- Missing Wall - Goes to Ceiling **2' X 8'** **Opens into FIRE\_PLACE**

DESCRIPTION	QUANTITY	UNIT PRICE	TAX	O&P	RCV	DEPREC.	ACV
848. Seal/prime then paint the walls (2 coats)	628.55 SF	1.13	8.67	215.68	934.61	(0.00)	934.61
849. Drywall patch / small repair, ready for paint	4.00 EA	119.26	0.85	143.38	621.27	(0.00)	621.27



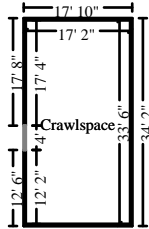
# Elias Brothers General Contractor, Inc

Elias Brothers GC Division  
 4627 Arnold Avenue, Suite #201  
 Naples, FL 34104  
 Office: 239-293-2442  
 elizabeth@ebgcontracting.com

## CONTINUED - Living Room

DESCRIPTION	QUANTITY	UNIT PRICE	TAX	O&P	RCV	DEPREC.	ACV
850. Subfloor Bracing*	265.00 SF	4.15	65.99	349.72	1,515.46	(0.00)	1,515.46
851. Final cleaning - construction - Residential	233.36 SF	0.34	0.00	23.80	103.14	(0.00)	103.14
852. Contents - move out then reset - Extra large room	1.00 EA	231.15	0.00	69.34	300.49	(0.00)	300.49
853. Apply plant-based anti-microbial agent to the floor	233.36 SF	0.33	0.70	23.32	101.03	(0.00)	101.03
854. Outlet	5.00 EA	21.39	0.51	32.24	139.70	(0.00)	139.70
855. Paint baseboard - two coats	64.15 LF	1.69	0.65	32.72	141.78	(0.00)	141.78
856. Baseboard - 5 1/4"	64.15 LF	5.76	11.20	114.22	494.92	(0.00)	494.92
858. 1/2" - drywall per LF - up to 2' tall	64.15 LF	13.34	5.89	258.48	1,120.13	(0.00)	1,120.13
859. Mask and cover light fixture	2.00 EA	16.59	0.09	9.98	43.25	(0.00)	43.25
860. Mask and prep for paint - plastic, paper, tape (per LF)	53.83 LF	1.59	0.87	25.94	112.40	(0.00)	112.40
886. Fir subfloor - no finish	233.36 SF	8.00	50.83	575.30	2,493.01	(0.00)	2,493.01
895. Clean ceiling fan and light	1.00 EA	33.71	0.00	10.12	43.83	(0.00)	43.83
910. Detach & Reset Window drapery - hardware - Large	1.00 EA	43.59	0.00	13.08	56.67	(0.00)	56.67
911. Add for prefinished crown molding per LF	20.00 LF	11.35	8.57	70.68	306.25	(0.00)	306.25
912. Paint crown molding, oversized - two coats	64.15 LF	1.91	0.81	37.00	160.34	(0.00)	160.34
970. Tile floor covering - Premium grade	268.36 SF	16.65	180.82	1,394.70	6,043.71	(0.00)	6,043.71
971. 1/4" Cement board	233.36 SF	3.91	20.72	279.96	1,213.12	(0.00)	1,213.12
972. Tile/stone sealer	233.36 SF	0.84	4.48	60.14	260.64	(0.00)	260.64
1,015. Batt insulation - 4" - R13 - paper / foil faced	157.14 SF	0.95	6.13	46.62	202.03	(0.00)	202.03
1,034. Base shoe	64.15 LF	1.92	2.93	37.84	163.94	(0.00)	163.94
<b>Totals: Living Room</b>			<b>370.71</b>	<b>3,824.26</b>	<b>16,571.72</b>	<b>0.00</b>	<b>16,571.72</b>

Elias Brothers GC Division  
4627 Arnold Avenue, Suite #201  
Naples, FL 34104  
Office: 239-293-2442  
elizabeth@ebgcontracting.com



**Crawlspace**

**Height: 8'**

784.00 SF Walls	575.08 SF Ceiling
1359.08 SF Walls & Ceiling	575.08 SF Floor
63.90 SY Flooring	97.33 LF Floor Perimeter
101.33 LF Ceil. Perimeter	

**Missing Wall - Goes to Floor**

**4' X 6' 8"**

**Opens into Exterior**

DESCRIPTION	QUANTITY	UNIT PRICE	TAX	O&P	RCV	DEPREC.	ACV
980. Dehumidifier (per 24 hr period) - 160+ ppd - No monitor.	2.00 EA	133.00	0.00	79.80	345.80	(0.00)	345.80
981. Batt insulation - Add-on for confined spaces	575.08 SF	0.37	0.00	63.84	276.62	(0.00)	276.62
982. Moisture protection - vapor barrier seam tape	575.08 SF	0.14	1.04	24.48	106.03	(0.00)	106.03
983. Moisture protection for crawl space - visqueen - 10 mil	575.08 SF	1.66	3.80	287.52	1,245.95	(0.00)	1,245.95
984. Vapor barrier - 15# felt	575.08 SF	0.36	2.42	62.82	272.27	(0.00)	272.27
985. Clean foundation wall	194.67 SF	0.71	0.23	41.52	179.97	(0.00)	179.97
986. Batt insulation - 4" - R13 - paper / foil faced	196.00 SF	0.95	7.64	58.16	252.00	(0.00)	252.00
987. Bid Item	1.00 EA	850.00	0.00	0.00	850.00	(0.00)	850.00
<b><u>PPE and Professional Ventilation Equipment for working conditions</u></b>							
988. Moisture protection for crawl space - hydrated lime	575.08 SF	1.04	7.25	181.60	786.93	(0.00)	786.93
989. Negative air fan/Air scrubber (24 hr period) - No monit.	2.00 DA	70.00	0.00	42.00	182.00	(0.00)	182.00
<b>Per OSHA Requirement</b>							
<b>Totals: Crawlspace</b>			<b>22.38</b>	<b>841.74</b>	<b>4,497.57</b>	<b>0.00</b>	<b>4,497.57</b>
<b>Total: Main Level</b>			<b>4,419.11</b>	<b>47,035.64</b>	<b>205,018.89</b>	<b>0.00</b>	<b>205,018.89</b>

**Labor Minimums Applied**

DESCRIPTION	QUANTITY	UNIT PRICE	TAX	O&P	RCV	DEPREC.	ACV
1,041. Plaster labor minimum	1.00 EA	528.48	0.00	158.54	687.02	(0.00)	687.02
418. Door labor minimum	1.00 EA	96.85	0.00	29.06	125.91	(0.00)	125.91
<b>Totals: Labor Minimums Applied</b>			<b>0.00</b>	<b>187.60</b>	<b>812.93</b>	<b>0.00</b>	<b>812.93</b>
<b>Line Item Totals: 17603_CAP_RECON</b>			<b>4,419.11</b>	<b>47,223.24</b>	<b>205,831.82</b>	<b>0.00</b>	<b>205,831.82</b>





# Elias Brothers General Contractor, Inc

---

Elias Brothers GC Division  
4627 Arnold Avenue, Suite #201  
Naples, FL 34104  
Office: 239-293-2442  
elizabeth@ebgcontracting.com

## Grand Total Areas:

6,652.20	SF Walls	2,373.91	SF Ceiling	9,026.12	SF Walls and Ceiling
2,373.91	SF Floor	263.77	SY Flooring	665.03	LF Floor Perimeter
0.00	SF Long Wall	0.00	SF Short Wall	681.45	LF Ceil. Perimeter
2,373.91	Floor Area	2,545.00	Total Area	6,652.20	Interior Wall Area
3,586.67	Exterior Wall Area	331.83	Exterior Perimeter of Walls		
0.00	Surface Area	0.00	Number of Squares	0.00	Total Perimeter Length
0.00	Total Ridge Length	0.00	Total Hip Length		



# Elias Brothers General Contractor, Inc

---

Elias Brothers GC Division  
4627 Arnold Avenue, Suite #201  
Naples, FL 34104  
Office: 239-293-2442  
elizabeth@ebgcontracting.com

## Summary

Line Item Total	154,189.47
Material Sales Tax	4,392.40
Storage Rental Tax	26.71
Subtotal	158,608.58
Overhead	23,611.62
Profit	23,611.62
<b>Replacement Cost Value</b>	<b>\$205,831.82</b>
<b>Net Claim</b>	<b>\$205,831.82</b>

---

Elizabeth Brath  
Estimator



# Elias Brothers General Contractor, Inc

Elias Brothers GC Division  
4627 Arnold Avenue, Suite #201  
Naples, FL 34104  
Office: 239-293-2442  
elizabeth@ebgcontracting.com

## Recap of Taxes, Overhead and Profit

	Overhead (15%)	Profit (15%)	Material Sales Tax (6%)	Laundering Tax (2%)	Manuf. Home Tax (6%)	Storage Rental Tax (6%)
Line Items	23,611.62	23,611.62	4,392.40	0.00	0.00	26.71
<b>Total</b>	<b>23,611.62</b>	<b>23,611.62</b>	<b>4,392.40</b>	<b>0.00</b>	<b>0.00</b>	<b>26.71</b>

Elias Brothers GC Division  
4627 Arnold Avenue, Suite #201  
Naples, FL 34104  
Office: 239-293-2442  
elizabeth@ebgcontracting.com

**Sales Agreement**

This agreement is between  
Distributor and Customer

Last Modified Date: 01/13/2023 11:43:23

PO#:

Job Name: Island Park SGD

Job Address:

Quote # 7348784

Quote Date: 01/13/2023

**Ship To**

Ship To# A29743  
ABC SUPPLY #489 - NSW NAPLES  
8981 QUALITY ROAD C/O ELIAS BROTHERS GROUP  
065002-890  
BONITA SPRINGS, FL 34135-7278  
Phone# Fax# (239) 597-2529

**Customer**

Account #  
Phone# Fax#

Line #	Item Description	Quantity	Line Pricing		
0001 (1.00)	<b>SGD770</b> SLIDING GLASS DOOR 770 73.X83.,BYPASS,2P2T,XX,STD,4,BOX,10PB,H/H 7/16,CLEAR,NO GRID,BS,1814K,ALL	Ordered: 1.00	List Price \$7,495.83	Sell Price \$7,495.83	Ext Price \$7,495.83
	 <p>Send Unit: COMPLETE NOA Selection: 22-0727.06 Pnl/Trk: 2 Panel / 2 Track Panel Stack: STD Width: 73.0000 Actual Size: 73 X 83 Frame Color: 10PB - Bronze Glass: 7/16" LAMI (3/16 HS - .090 SGP- 3/16 HS) Does unit need to meet Turtle Code: NO Low E: NONE Interlayer Type: SGP090 Add HD Stile for DP Upgrade: Y Sill Riser Height: 4.0000 Screen Panel Type: BOX Screen Rail Qty: 1-BOX Handle Type: RAISED/RECESS Lock/Handle Location: STD Key Lock: N Panel Opr Rlr: STSTEELTM Stainless Steel Tandem Anchor Group: C.SG6.7 CAR#: 22-0727.06 NegativeDesignPressure: 90.0000 EnergyStar: NONE UF: 1.1100 VT: 0.6100</p>		<p>Certification Type: MIAMI Door Configuration: BYPASS Panel Configuration: XX Size Selection: CUSTOM Height: 83.0000 Calc Track Length: 73.0000 Glass Makeup: LMS309S3S Glass Family: LM - Laminated Glass Color: CL - CLEAR Privacy Glass: NONE - NONE Grid Type: NONE - NO Grid Stile: HVY/HVY Sill Riser Type: BOX Screen Type: 1814K - 1814 Charcoal Screen Rail Integrated: Y Handle Color: K - Black Secondary Lock Type: NONE Keyed Alike: N Screen Rlr: STSTEEL Stainless Steel Boxing Options: N - None PositiveDesignPressure: 90.0000 PANumber: FL251 CondensationResistance: 15.0000 SolarHeatGainCoeff: 0.5400 VTCOG: 0.8600</p>		
Location:					

1

Taken By: Elizabeth Brath

Elias Brothers GC Division  
4627 Arnold Avenue, Suite #201  
Naples, FL 34104  
Office: 239-293-2442  
elizabeth@ebgcontracting.com

**Sales Agreement**

This agreement is between  
Distributor and Customer

<b>Last Modified Date:</b> 01/13/2023 11:43:23
<b>PO#:</b>
<b>Job Name:</b> Island Park SGD
<b>Job Address:</b>
Quote # 7348784
<b>Quote Date:</b> 01/13/2023

**Ship To**

Ship To# A29743
ABC SUPPLY #489 - NSW NAPLES 8981 QUALITY ROAD C/O ELIAS BROTHERS GROUP 065002-890 BONITA SPRINGS, FL 34135-7278
Phone# Fax# (239) 597-2529

**Customer**

Account #
Phone# Fax#

Line #	Item Description	Quantity	Line Pricing		
0001 (1.00)	<b>SGD770 SLIDING GLASS DOOR 770</b> 73.X83.,BYPASS,2P2T,XX,STD,4,BOX,10PB,H/H 7/16,CLEAR,NO GRID,BS,1814K,ALL	<b>Ordered:</b> 1.00	<u>List Price</u> \$7,495.83	<u>Sell Price</u> \$7,495.83	<u>Ext Price</u> \$7,495.83
	 <p>Send Unit: COMPLETE NOA Selection: 22-0727.06 Pnl/Trk: 2 Panel / 2 Track Panel Stack: STD Width: 73.0000 Actual Size: 73 X 83 Frame Color: 10PB - Bronze Glass: 7/16" LAMI (3/16 HS - .090 SGP- 3/16 HS) Does unit need to meet Turtle Code: NO Low E: NONE Interlayer Type: SGP090 Add HD Stile for DP Upgrade: Y Sill Riser Height: 4.0000 Screen Panel Type: BOX Screen Rail Qty: 1-BOX Handle Type: RAISED/RECESS Lock/Handle Location: STD Key Lock: N Panel Opr Rlr: STSTEELTM Stainless Steel Tandem Anchor Group: C.SG6.7 CAR#: 22-0727.06 NegativeDesignPressure: 90.0000 EnergyStar: NONE UF: 1.1100 VT: 0.6100</p>		<p>Certification Type: MIAMI Door Configuration: BYPASS Panel Configuration: XX Size Selection: CUSTOM Height: 83.0000 Calc Track Length: 73.0000 Glass Makeup: LMS309S3S Glass Family: LM - Laminated Glass Color: CL - CLEAR Privacy Glass: NONE - NONE Grid Type: NONE - NO Grid Stile: HVY/HVY Sill Riser Type: BOX Screen Type: 1814K - 1814 Charcoal Screen Rail Integrated: Y Handle Color: K - Black Secondary Lock Type: NONE Keyed Alike: N Screen Rlr: STSTEEL Stainless Steel Boxing Options: N - None PositiveDesignPressure: 90.0000 PANumber: FL251 CondensationResistance: 15.0000 SolarHeatGainCoeff: 0.5400 VTCOG: 0.8600</p>		
<b>Location:</b>					

2

Taken By: Elizabeth Brath

Elias Brothers GC Division  
4627 Arnold Avenue, Suite #201  
Naples, FL 34104  
Office: 239-293-2442  
elizabeth@ebgcontracting.com



3 Main Level/Dining Room - 1-  
DiningRoom

Elias Brothers GC Division  
4627 Arnold Avenue, Suite #201  
Naples, FL 34104  
Office: 239-293-2442  
elizabeth@ebgcontracting.com



4 Main Level/Kitchen - 2-Kitchen

Elias Brothers GC Division  
4627 Arnold Avenue, Suite #201  
Naples, FL 34104  
Office: 239-293-2442  
elizabeth@ebgcontracting.com



5 Main Level/Laundry Room - 3-  
Laundry room



Elias Brothers GC Division  
4627 Arnold Avenue, Suite #201  
Naples, FL 34104  
Office: 239-293-2442  
elizabeth@ebgcontracting.com



6 Main Level/Master shower - 4-  
Master Shower

Elias Brothers GC Division  
4627 Arnold Avenue, Suite #201  
Naples, FL 34104  
Office: 239-293-2442  
elizabeth@ebgcontracting.com



7 Main Level/Master bath - 5-Master Bath

Elias Brothers GC Division  
4627 Arnold Avenue, Suite #201  
Naples, FL 34104  
Office: 239-293-2442  
elizabeth@ebgcontracting.com



8 Main Level/Master Bedroom - 6-  
Master Bedroom

Elias Brothers GC Division  
4627 Arnold Avenue, Suite #201  
Naples, FL 34104  
Office: 239-293-2442  
elizabeth@ebgcontracting.com



9 Main Level/Guest Bath - 7-Guest  
bath

Elias Brothers GC Division  
4627 Arnold Avenue, Suite #201  
Naples, FL 34104  
Office: 239-293-2442  
elizabeth@ebgcontracting.com



10 Main Level/Guest Room - 8-Guest room

